

# UNC Asheville Fact Book 2008-2009

Office of Institutional Research  
One University Heights  
Asheville, NC 28804-8510  
(828) 251-6619

Archer R. Gravely, Director  
Ken Wilson, Applications Programmer  
Rebecca Elkin, Research Associate  
Glenna Trull, Information Processing Assistant

Also available on the World Wide Web at:  
[www.unca.edu/ir/factbook](http://www.unca.edu/ir/factbook)



# Table of Contents

I. UNCA History and Governance	Page	Table	Figure
History of UNC Asheville	2		
Chief Executive Officers	2		
UNC Asheville Strategic Plan	3		
UNC Asheville Board of Trustees	4		
UNC Asheville Foundation Board	5		
UNC Asheville National Alumni Advisory Board	7		
II. Students and Alumni			
Admissions			
<hr/>			
NC Public High School Graduates: History and Projections	9		1
Fall Applications, Acceptances and Enrollments by Sex	10	1	
Out-of-State Freshman Applications, Acceptances and Enrollments by State	11	2	
Distribution of New Freshman Enrollments by Region	12		2
New Freshman Admission Scores by Residence Status	13	3	
Freshman Mean SAT Scores by UNC Institution	14	4	
Fall Freshman SAT Scores and H.S. Rank Distributions	15		3
Percent of New Freshmen in Top 20 % of High School Class by UNC Institution	16	5	
New Fall Transfer Enrollments by Institution Type	17	6	
Source of New Undergraduate Transfer Students	18	7	
Enrollments and Retention			
<hr/>			
Annual FTE History and Projections	19		4
Historical Resident Credit Enrollment Trends and Projections	20	8	
Student Credit Hours by Funding Category: History and Projections	21	9	
Student Enrollment Demographic Profile	22	10	
Fall Enrolled Students by U.S. Region and State	23	11	
Enrolled Students by North Carolina Region and County	25	12	
Minority Presence: Fall Semesters	27	13	
Distribution of Student Age by Class	28	14	
UNC System Undergraduate Student Demographic Comparisons	28	15	
Residence Halls and Number of Students Housed	29	16	
Commuter vs Residence Hall Students	29	17	
Summer School Headcount Enrollment by Class	30	18	
Summer School Headcount, FTE, and SCH Enrollment	30	19	
Distance Education Enrollment by Site	31	20	
Distance Education SCH by Funding Category	31	21	
Retention of New Fall Entering Full-time Freshmen	32	22	
Retention of New Fall Entering Transfers	33	23	
Academic Program Inventory	34	24	
Enrollment by Major (Spring Semesters)	35	25	
Degrees Conferred by Academic Area and Major	36	26	
Average Undergraduate Class Size	37	27	

Programs	Page	Table	Figure
Grade Distribution by Course Level and Academic Year	38	28	
Weighted GPA by Academic Year and Course Level	39		5
Intercollegiate Athletics	40	29	
Asheville Graduate Center Participating Universitites and Programs	41	30	
Asheville Graduate Center Fall Headcount Enrollments	41	31	
Summer Conferences	42	32	
Continuing Education Enrollments	42	33	
<b>Financial Aid</b>			
Student Financial Aid by Source	43	34	
Students Receiving Financial Aid	44	35	
Intercollegiate Athletics Grants-In-Aid	45	36	
<b>Alumni</b>			
Current Residence of Alumni by US Region, State and Nation	46	37	
Alumni by North Carolina Region and County	48	38	

### III. Faculty and Staff

UNC Asheville Organizational Chart	51		6
Organizational Chart for Chancellor's Division	52		7
Organizational Chart for Academic Affairs	53		8
Organizational Chart for Finance and Operations	54		9
Organizational Chart for Student Affairs	55		10
Organizational Chart for Alumni & Development	56		11
Organization and Personnel	57	39	
Full-Time Employees by Type	60		12
Employees by Employment Status, Job Class, Race and Sex	61	40	
Full-Time Instructional Faculty by Rank, Sex and Tenure Status	62	41	
Full-Time Instructional Faculty with Terminal Degrees by Rank and Department	63	42	
Full-Time Instructional Faculty Salaries by Rank	64	43	
Faculty Salary Comparisons	65	44	

### IV. Fiscal Resources

Current Fund Revenues and Expenditures	67	45	
Operating Expenditures by Function	68	46	
Tuition and Fees Per Year	69	47	
External Grants and Contracts Funding Amounts by Fiscal Year	70	48	
Endowed Funds	71		13
Source of Outright Gift Income by Year	71	49	
Alumni Donations	72	50	
Outright Gift Income Summary	72	51	
Campus Map	73		14
Building Inventory	74	52	
Percent of Space in Satisfactory Condition	75		15
Percent of Space Needing Renovation by Cost Level	75		16
Percentage of General Purpose Classrooms Utilized by Day and Time	76	53	
Classrooms and Labs by Building	77	54	
Residence Hall Capacity and Number of Students Housed	78	55	
Capital Improvements	79	56	
Ramsey Library Resources	79	57	

# History and Governance

## History of UNC Asheville

- 1927 Founded as Buncombe County Junior College under the aegis of the Buncombe County public school system
- 1930 Merged with College of the City of Asheville; name changed to Biltmore Junior College
- 1936 Name changed to Asheville-Biltmore College and control passed to the Asheville City School Board
- 1957 Became first institution to qualify as a state-supported community college
- 1961 Institution moved to present location in North Asheville. First black student enrolled
- 1963 Asheville-Biltmore College became a state-supported senior college under a new board of trustees
- 1966 First baccalaureate degrees awarded
- 1969 Asheville-Biltmore College became the University of North Carolina at Asheville, one of six campuses of the Consolidated University
- 1972 The 10 remaining state-supported senior institutions were merged into a unified 16 member system, The University of North Carolina
- 1991 First master's degrees awarded in Liberal Arts
- 1992 Designated as a Liberal Arts I College by the UNC Board of Governors

## Chief Executive Officers

1927-1932	S.B. Conley, Dean
1932-1936	A.C. Reynolds, President
1936-1941	Charles A. Lloyd, Dean
1941-1945	J.J. Stevenson, Dean
1945-1946	William H. Morgan, Dean
1946-1947	Clarence N. Gilbert, Dean
1947	R.A. Tomberlin, President
1947-1962	Glenn L. Bushey, President
1962-1969	William E. Highsmith, President
1969-1977	William E. Highsmith, Chancellor
1977	Arnold K. King, Acting Chancellor
1977-1984	William E. Highsmith, Chancellor
1984-1990	David G. Brown, Chancellor
1990-1991	Roy Carroll, Interim Chancellor
1991-1993	Samuel Schuman, Chancellor
1994	Larry Wilson, Interim Chancellor
1994-1999	Patsy Reed, Chancellor
1999-2005	James H. Mullen, Jr., Chancellor
2005-	Anne Ponder, Chancellor

Source: Chancellor's Office

# UNC Asheville Strategic Plan

## *The Standard of Excellence in Public Undergraduate Education*

Our way of practicing the liberal arts embraces the centrality of learning, rigorous undergraduate research & scholarship, creative expression, exemplary teaching, and an informed commitment to serving our community and to leading our complex world.

# Public \* Liberal Arts \* Sustainability

### Diversity & Inclusion:

Assert and demonstrate our individual and collective responsibility to invite, honor, and learn from our differences, as preparation for an increasingly interconnected world.

Intentionally reflect the vibrant demographics, in all its complexity, of our city, our region, our State, and beyond.

### North Carolina:

Attract, retain, and graduate North Carolina students of high academic promise by eliminating financial barriers to participation.

Furnish North Carolina's economy with highly accomplished thinkers, negotiators, planners, collaborators, and problem-solvers.

Assure that our campus, our region, and our State understand how uniquely positioned we are to define the practical, life-long value of a liberal arts education in the 21st century.

### Asheville:

Share responsibility with the greater Asheville community for collaborations on issues of mutual concern, benefit, and accomplishment.

### Undergraduate Education:

Serve as the standard of excellence for public liberal arts undergraduate education, emphasizing interdisciplinary learning and exceptional faculty-student mentoring.

### Undergraduate Research:

UNC Asheville will be the leading undergraduate research institution for faculty-mentored, student-directed Undergraduate Research.

Assure continual stewardship of the Undergraduate Research program and deepen its focus on societal concerns.

### The Campus Experience:

Engage all students in a robust campus learning experience based on community responsibility, learning, respect, and service.

### Social Sustainability

Build a respectful, vibrant, responsible and inclusive campus community for everyone that encourages academic, civic, and public engagement.

Invest in the development and success of all students, faculty, and staff members.

### Economic Sustainability:

Demonstrate the value of UNC Asheville's distinctiveness within the UNC system so that our optimal size and liberal arts mission are acknowledged and rewarded within the State formula for funding higher education.

Increase private funding to assure the University's ability to fulfill its commitments to generations of students and citizens of North Carolina.

### Environmental Sustainability:

Build on our state-wide leadership and recognition for environmental stewardship through continued academic inquiry, energy efficiency, conservation, and green building practices. Pursue creative, respectful, mission-focused campus expansion.

# UNC Asheville students

*develop an inquisitive, interdisciplinary, engaged way of life in a vibrant university community which is just, collaborative, and increasingly diverse.*

They demonstrate an accountability to their own moral and ethical principles, and a responsibility to individuals, community, and humanity; they develop a service orientation, a sense of adventure, and respect for differences; they discover the joys of entrepreneurship, enlightened risk-taking, and responsible activism.

They understand the interconnectedness of all disciplines, ideas, actions, and individuals; they practice lively engagement with others and the world; they have built a strong understanding of self, purpose, connection to the world, and their potential for changing it. Liberal arts is a habit of heart and mind that our students can articulate as a foundation for their life-long passion for learning and the University that inspired it.

They develop the inspiration, skills, and discipline to identify individual, community, and global needs; critical thinking and problem solving skills to address those needs; courage, inclination, and work ethic to develop solutions, work toward them, and inspire others to do the same. Students identify their unique University experience as something to cherish and support throughout their lives.

UNC Asheville Board of Trustees  
2008 - 2009

<i>Member</i>	<i>Business</i>	<i>Home City</i>	<i>Term Expires</i>
Alfred J. Whitesides, Jr. <i>Chair</i>	Vice President Mountain 1st	Asheville	2009
Pamela Turner <i>Vice Chair</i>	Co-Owner Mills Manufacturing	Asheville	2011
David Cogburn, M.D. <i>Secretary</i>	Blue Ridge Mountain Dermatology	Asheville	2011
Janice Brumit	Vice President Retired	Asheville	2009
James R. Buckner	CEO IMPACT Educational Consulting Assoc., Inc.	Suwanee GA	2009
Phil Carson	Retired	Asheville	2009
Joseph Damore	President & CEO Mission Hospitals	Asheville	2009
Nicholas Ladd	President UNCA Student Government	Asheville	2009
Sue McClinton	Vice President William S. Hein & Company	Asheville	2011
Audrey Byrd Mosley	National Academy of Sciences	Washington DC	2011
Douglas Orr	President Emeritus Warren Wilson College	Black Mountain	2011
Virgil Smith	Vice President of Talent Management Gannett & Company	Asheville	2011
Cissie Stevens	Retired	Asheville	2009

Last update: 10/09/08  
Source: Chancellor's Office

UNC Asheville Foundation Board  
Fall 2008

<i>Member</i>	<i>Home City</i>	<i>Term Expires</i>
Bob Roberts <i>Chair</i>	Asheville	2010 (Term 2)
Jim Heggland <i>Associate Chair</i>	Asheville	2011 (Term 2)
Michael Andry	Asheville	2011 (Term 1)
Charles Atkins	Raleigh	2010 (Term 2)
Rob Bowen <i>Faculty Representative</i>	Asheville	2009 (Term 2)
Bill Boyum	Asheville	2009 (Term 1)
David Brown	Asheville	2010 (Term 2)
Guadalupe Chavarria	Asheville	2010 (Term 1)
Bobby Daugherty	Black Mountain	2010 (Term 2)
Al Davis	Asheville	2011 (Term 2)
J.W. Davis	Flat Rock	2010 (Term 1)
Charles Frederick	Asheville	2011 (Term 2)
Dianna B. Goodman	Asheville	2010 (Term 1)
George Goosmann III	Biltmore Forest	2010 (Term 1)
David Hammett	Fairview	2011 (Term 1)
Harry Harrison	Asheville	2010 (Term 1)
Tammy Huffman <i>Faculty Representative</i>	Asheville	2009 (Term 2)
Nicholas Ladd <i>Student Representative (SGA)</i>	Asheville	2009 (Term 1)
Craig Madison	Fairview	2011 (Term 2)
George Morosani	Asheville	2010 (Term 1)
Charles Nesbitt	Asheville	2011 (Term 1)

UNCA Foundation Board  
(Continued)

<i>Member</i>	<i>Home City</i>	<i>Term Expires</i>
Kenneth Partin	Asheville	2011 (Term 2)
Neal Rhoades	Raleigh	2009 (Term 1)
Robby Russell	Arden	2010 (Term 2)
Dan Scannel	Asheville	2011 (Term 1)
Robert Sipes	Arden	2010 (Term 2)
David Sweatt	Asheville	2011 (Term 1)
Rob Tatum <i>(Chancellor Appointed Faculty Representative)</i>	Asheville	2009 (Term 1)
Ed Towson III	Asheville	2010 (Term 2)
Charles Wood	Fairview	2009 (Term 1)
Frosene Zeis	Asheville	2009 (Term 1)

Ex-Officio:

Anne Ponder  
*Chancellor*

John Pierce  
*Vice Chancellor for Finance & Campus Operations, Foundation Treasurer*

William P. Massey  
*Vice Chancellor for Alumni & Development, Foundation Secretary*

James R. Buchner  
*UNC Asheville Board of Trustees Liaison*

UNC Asheville National Alumni Advisory Council  
2008-09

Derek J. Allen '93 .....	Greensboro
Barbara Ann Baker '71 .....	Durham
Joseph M. Beckert '88.....	Charlotte
Jason L. Boyles '01.....	Charlotte
Athena F. Brooks '88.....	Asheville
Anne May Cagle '86.....	Rock Hill, SC
James C. Carter '00 .....	Asheville
R. Wiley Cash '00.....	Bethany, WV
Jasmin M. Gentling '99 .....	Asheville
Tarik A. Glenn '06 .....	Asheville
Steve A. Green '01.....	Asheville
Heather E. Hudson '66 .....	Camden, AR
Neal D. Rhoades '86.....	Raleigh
Betty J. Seifert '83 .....	Cornelius
B. Smith Thomas '73.....	Lawrenceville, GA
Karla L. Worley '97 .....	Dunwoody, GA

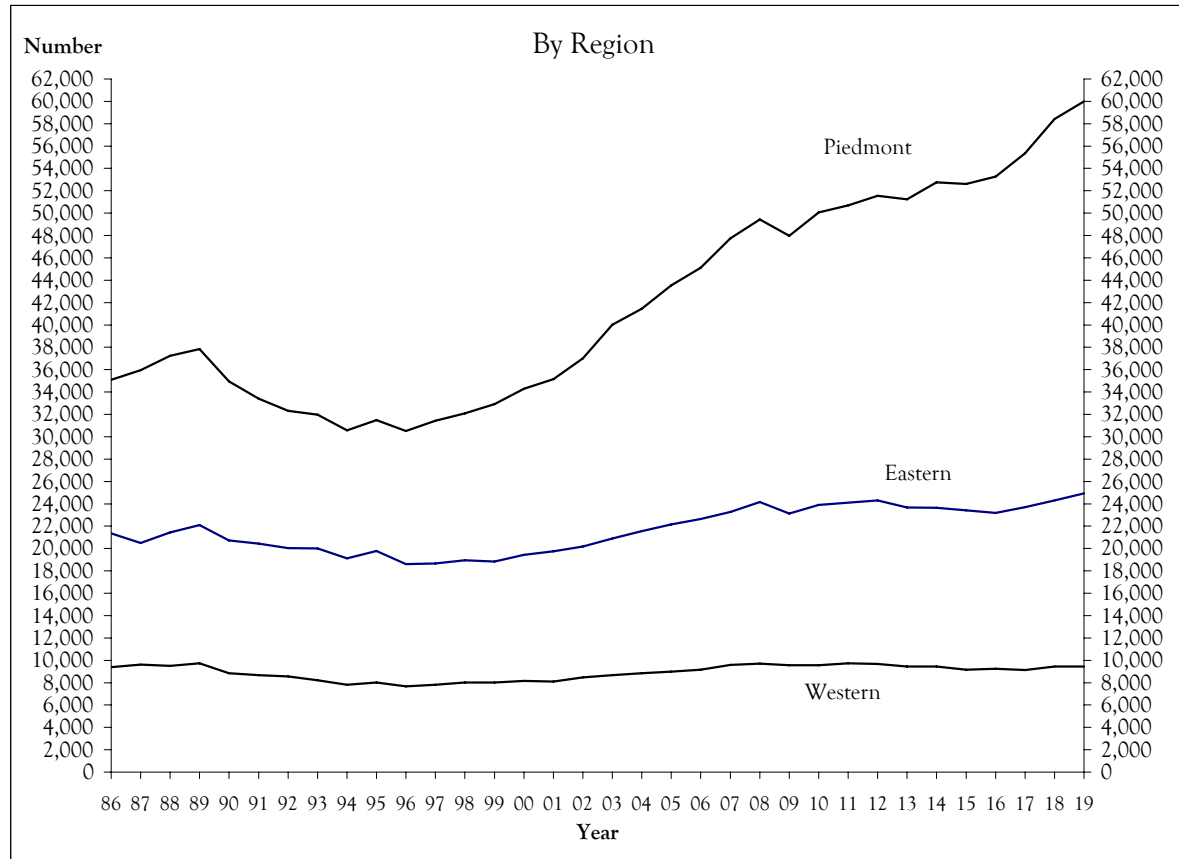
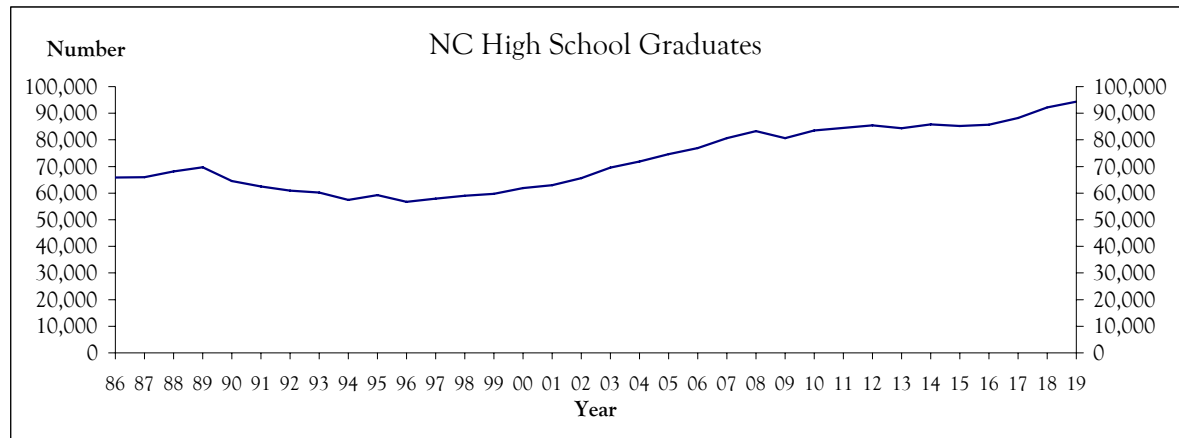
Ex-Officio

Anne Ponder .....	<i>Chancellor</i>
William P. Massey.....	<i>Vice Chancellor for Alumni and Development</i>
Kevan D. Frazier '92 .....	<i>Associate Vice Chancellor for Alumni</i>

## Students and Alumni

# Figure 1: NC Public High School Graduates: History and Projections

Number of Graduates				
North Carolina Regions				
Year	Eastern	Piedmont	Western	NC Total
86	21,361	35,105	9,399	65,865
87	20,482	35,946	9,617	66,045
88	21,426	37,233	9,489	68,148
89	22,112	37,853	9,744	69,709
90	20,732	34,951	8,838	64,521
91	20,447	33,403	8,683	62,533
92	20,039	32,308	8,564	60,911
93	20,019	31,974	8,218	60,211
94	19,107	30,568	7,820	57,495
95	19,767	31,494	8,011	59,272
96	18,593	30,513	7,664	56,770
97	18,655	31,416	7,815	57,886
98	18,946	32,099	8,004	59,049
99	18,848	32,916	8,012	59,776
00	19,446	34,281	8,160	61,887
01	19,755	35,153	8,106	63,014
02	20,187	37,015	8,479	65,681
03	20,889	40,006	8,673	69,568
04	21,560	41,460	8,833	71,853
05	22,168	43,529	8,994	74,691
06	22,652	45,126	9,162	76,940
07	23,278	47,731	9,597	80,606
08	24,167	49,422	9,705	83,294
09	23,122	47,969	9,570	80,661
10	23,898	50,078	9,562	83,538
11	24,093	50,706	9,731	84,530
12	24,296	51,555	9,664	85,515
13	23,671	51,246	9,433	84,350
14	23,647	52,743	9,444	85,834
15	23,422	52,599	9,163	85,184
16	23,198	53,280	9,252	85,730
17	23,713	55,359	9,143	88,215
18	24,314	58,420	9,455	92,189
19	24,934	60,004	9,432	94,370



Last update: 12/2008

Table 1  
 Fall Applications\*, Acceptances and Enrollments  
 New Degree-Seeking Students by Sex: Three-Year Trend

		2006			2007			2008		
		Female	Male	Total	Female	Male	Total	Female	Male	Total
First-Time Freshmen	Number of Applicants	1,520	1135	2,655	1,546	1105	2,651	1,437	1,027	2,464
	Number Accepted	1156	735	1,891	1237	775	2,012	1,135	672	1,807
	Accept/Apply Ratio	76.1	64.8	71.2	80.0	70.1	75.9	79.0	65.4	73.3
	Number Enrolled	331	241	572	344	233	577	361	225	586
	Enroll/Accept Ratio	28.6	32.8	30.2	27.8	30.1	28.7	31.8	33.5	32.4
New Transfers	Number of Applicants	318	260	578	322	278	600	335	274	609
	Number Accepted	282	215	497	264	221	485	287	208	495
	Accept/Apply Ratio	88.7	82.7	86.0	82.0	79.5	80.8	85.7	75.9	81.3
	Number Enrolled	168	137	305	149	138	287	169	128	297
	Enroll/Accept Ratio	59.6	63.7	61.4	56.4	62.4	59.2	58.9	61.5	60.0
New Graduate Students	Number of Applicants	5	.	5	18	4	22	13	12	25
	Number Accepted	5	.	5	18	4	22	13	12	25
	Accept/Apply Ratio	100.0	.	100.0	100.0	100.0	100.0	100.0	100.0	100.0
	Number Enrolled	1	.	1	12	2	14	8	11	19
	Enroll/Accept Ratio	20.0	.	20.0	66.7	50.0	63.6	61.5	91.7	76.0

\* Completed applications with decision.

Table 2  
Out of State Freshman Applications, Acceptances and Enrollments by State

	2006			2007			2008		
	Applied	Accepted	Enrolled	Applied	Accepted	Enrolled	Applied	Accepted	Enrolled
Military	2	1	1	4	2	0	1	1	0
Alaska	2	2	0	2	1	0			
Alabama	21	15	4	22	17	3	27	20	4
Arkansas	6	5	0	5	5	2	2	1	0
Arizona				3	1	0	4	1	0
California	13	6	1	19	13	4	12	7	1
Colorado	11	7	0	8	7	1	2	2	0
Connecticut	17	4	0	26	15	2	15	7	2
District of Columbia	14	8	1	13	8	2	11	5	0
Delaware	6	5	0	2	2	1	2	1	0
Florida	77	56	10	72	47	9	74	60	8
Georgia	100	65	13	82	62	12	108	83	16
Iowa	1	1	0	2	2	0	1	1	0
Idaho	3	2	0	2	2	0			
Illinois	31	20	3	21	16	2	18	6	3
Indiana	9	6	1	1	0	0	5	5	2
Kansas	3	2	0	3	3	0	1	1	0
Kentucky	6	4	3	15	10	2	11	7	1
Louisiana	7	4	2	4	3	1	15	10	0
Massachusetts	18	10	1	17	9	1	21	15	0
Maryland	44	33	4	46	38	8	49	37	10
Maine	6	3	0	6	5	1	3	1	0
Michigan	12	5	3	5	5	0	9	7	0
Minnesota	6	2	1	4	4	1	3	2	0
Missouri	6	6	0	5	3	2	3	2	1
Mississippi	4	2	0	2	1	0	3	2	0
Montana				1	1	0			
New Hampshire	8	4	0	5	5	0	6	4	1
New Jersey	29	17	1	39	25	4	30	21	8
New Mexico	1	1	0	3	3	1	1	1	0
Nevada	2	2	1	3	2	2			
New York	52	30	2	29	22	2	35	21	0
Ohio	25	19	0	23	13	3	23	18	8
Oklahoma	2	2	0						
Oregon	2	1	0						
Pennsylvania	39	20	4	34	23	3	25	17	4
Puerto Rico				1	0	0	2	2	1
Rhode Island	9	5	0	3	2	1	2	1	1
South Carolina	37	22	4	39	28	8	47	29	5
Tennessee	65	50	9	62	44	5	53	36	8
Texas	22	13	6	25	16	3	18	10	2
Unknown	4	0	0						
Utah	2	1	0	2	2	0			
Virginia	70	50	11	69	49	8	59	36	8
Virgin Islands				4	1	0			
Vermont	7	2	0	10	7	2	7	6	1
Washington	5	4	0	5	4	1	1	1	0
Wisconsin	6	1	0	5	3	0	9	6	0
West Virginia	7	6	0	7	6	1	4	3	1
Wyoming	1	0	0	1	0	0			
Unknown Out-St	9	4	0	13	7	0	9	6	2
International	34	23	7	20	10	2	25	9	2
	863	551	93	794	554	100	756	511	100

Figure 2: Distribution of New Freshman Enrollments by Region  
Fall Semesters

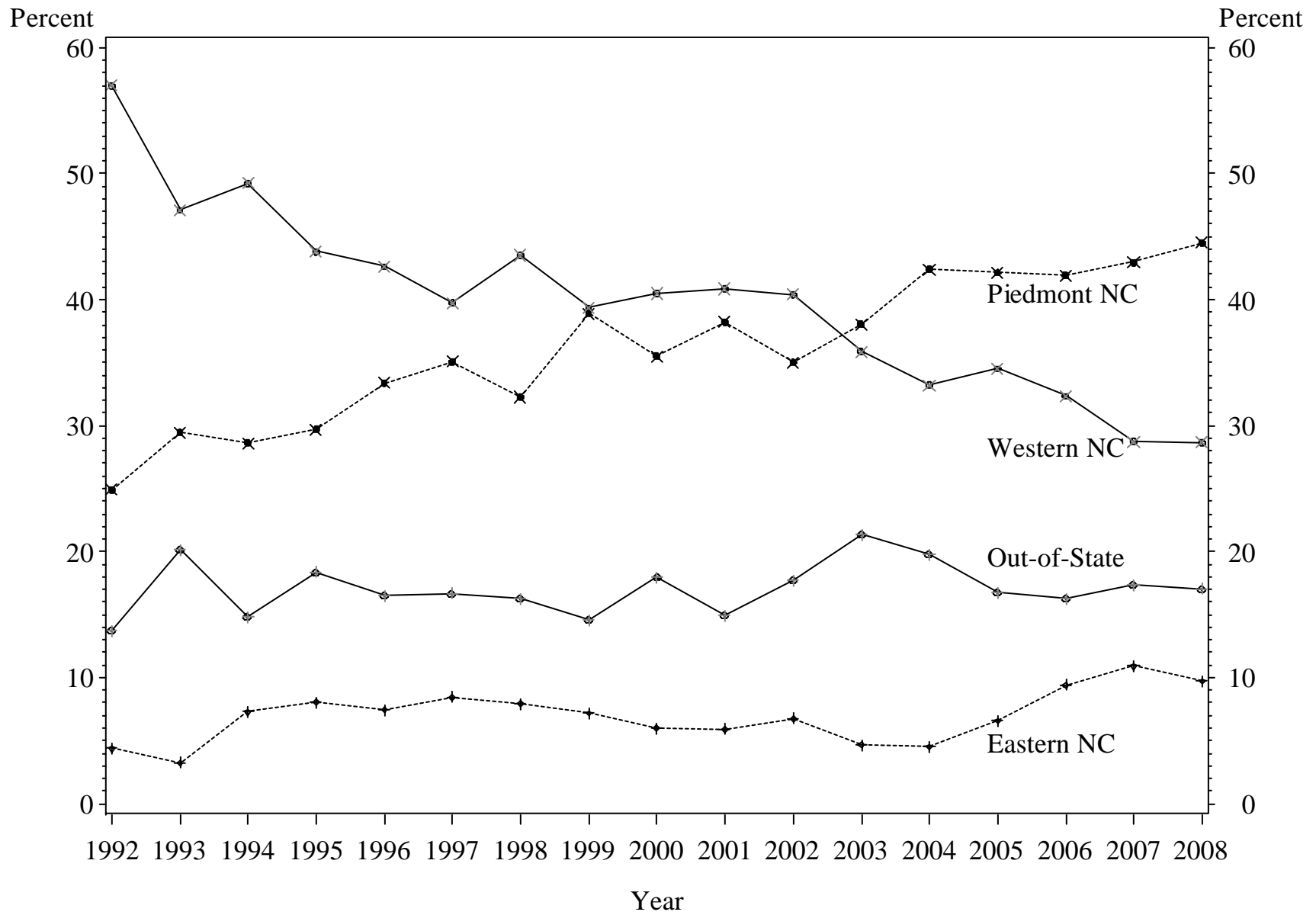


Table 3  
New Freshman Admission Scores  
by Residence Status

Fall Semester		N	Combined SAT			Top 20%	H.S. GPA		H.S. GPA Weighted	
			Mean	25th %tile	75th %tile	Percent	Submit	Mean	Submit	Mean
						H.S. Class				
1999	In-State	393	1,153	1,060	1,240	51.2	90.8	3.38	97.7	3.81
	Out-of-State	67	1,134	1,050	1,210	50.0	16.4	3.19	86.6	3.47
	Year Total	460	1,151	1,060	1,240	51.1	80.0	3.38	96.1	3.77
2000	In-State	411	1,155	1,060	1,240	51.6	92.2	3.40	97.8	3.82
	Out-of-State	90	1,155	1,070	1,230	49.2	25.6	3.37	94.4	3.53
	Year Total	501	1,155	1,070	1,230	51.2	80.2	3.40	97.2	3.77
2001	In-State	387	1,163	1,070	1,240	53.4	92.8	3.42	96.4	3.90
	Out-of-State	68	1,139	1,040	1,250	61.4	29.4	3.56	83.8	3.70
	Year Total	455	1,160	1,060	1,240	54.3	83.3	3.42	94.5	3.87
2002	In-State	352	1,164	1,050	1,260	50.6	92.6	3.39	97.2	3.84
	Out-of-State	76	1,138	1,060	1,240	45.1	43.4	3.44	86.8	3.67
	Year Total	428	1,160	1,060	1,260	49.9	83.9	3.39	95.3	3.81
2003	In-State	471	1,164	1,070	1,260	43.4	90.2	3.36	92.6	3.81
	Out-of-State	128	1,173	1,080	1,250	52.0	35.2	3.35	70.3	3.63
	Year Total	599	1,166	1,070	1,250	44.7	78.5	3.36	87.8	3.78
2004	In-State	567	1,166	1,070	1,250	44.1	92.6	3.38	96.5	3.88
	Out-of-State	140	1,184	1,100	1,270	45.1	26.4	3.35	68.6	3.61
	Year Total	707	1,169	1,080	1,250	44.3	79.5	3.37	91.0	3.84
2005	In-State	393	1,184	1,090	1,280	54.9	89.8	3.45	93.1	4.00
	Out-of-State	79	1,176	1,045	1,280	51.0	41.8	3.44	69.6	3.74
	Year Total	472	1,183	1,090	1,280	54.5	81.8	3.45	89.2	3.97
2006	In-State	479	1,162	1,070	1,260	43.8	90.6	3.35	95.0	3.86
	Out-of-State	93	1,146	1,040	1,240	52.2	41.9	3.43	72.0	3.64
	Year Total	572	1,160	1,060	1,250	44.6	82.7	3.36	91.3	3.83
2007	In-State	477	1,153	1,060	1,250	44.3	90.2	3.38	94.8	3.91
	Out-of-State	100	1,164	1,100	1,250	51.0	45.0	3.44	71.0	3.73
	Year Total	577	1,155	1,070	1,250	45.0	82.3	3.38	90.6	3.89
2008	In-State	486	1,157	1,060	1,240	45.9	92.6	3.40	94.9	3.94
	Out-of-State	100	1,163	1,070	1,250	50.0	52.0	3.44	77.0	3.71
	Year Total	586	1,158	1,060	1,240	46.3	85.7	3.40	91.8	3.91

\*Weighted HS GPA includes advanced courses that carry more than four quality points per credit hour.

Table 4  
Fall Freshman Average SAT Scores\* by UNC Institution

School	1999	2000	2001	2002	2003	2004	2005	Fall 2006 <sup>1</sup>		Fall 2007 <sup>1</sup>		Fall 2008 <sup>1</sup>	
								Combined	Writing	Combined	Writing	Combined	Writing
UNCCH	1245	1251	1257	1267	1282	1287	1299	1292	627	1302	637	1301	638
NCSU	1179	1185	1175	1193	1195	1193	1183	1177	555	1171	557	1176	560
ASU	1092	1086	1101	1111	1115	1123	1131	1129	530	1125	540	1163	558
UNCA	1151	1155	1160	1160	1166	1169	1184	1160	566	1154	565	1158	564
UNCW	1086	1097	1091	1106	1104	1126	1134	1149	548	1157	557	1156	559
UNCSA <sup>2</sup>	1109	1104	1113	1154	1153	1105	1123	1094	538	1103	538	1111	549
UNCC	1034	1043	1052	1065	1069	1079	1082	1064	504	1064	508	1056	504
UNCG	1038	1037	1033	1035	1045	1045	1051	1044	504	1039	506	1039	505
WCU	994	1004	1011	1012	1023	1027	1027	1022	483	1022	485	1039	490
ECU	1016	1035	1029	1036	1048	1043	1042	1015	488	1019	485	1025	490
UNCP	932	927	924	934	950	948	938	939	445	950	446	928	436
NCAT	911	896	898	899	889	889	893	883	423	888	422	920	432
WSSU	837	869	865	868	867	888	900	892	426	876	421	874	418
FSU	867	840	845	868	867	845	847	857	408	846	403	865	408
NCCU	876	860	861	852	834	855	861	860	419	842	408	853	414
ECSU	823	822	837	817	848	841	849	835	400	846	409	835	406
UNC Avg.	1068	1073	1071	1072	1075	1079	1082	1078	516	1076	518	1083	522
N.C. Avg.	986	988	992	998	1001	1006	1010	1008	485	1004	482	1007	482
U.S. Avg.	1016	1019	1020	1020	1026	1026	1028	1021	497	1017	494	1017	494

\* Combined score includes critical reading (or verbal) and mathematics.

<sup>1</sup> Since fall 2006, figures include both combined and writing scores.

<sup>2</sup> Name change from NC School of the Arts to UNC School of the Arts

Source: *Statistical Abstract of Higher Education in NC*, Table 53

Figure 3: Fall 2008 Freshman SAT Scores and H.S. Rank Distributions

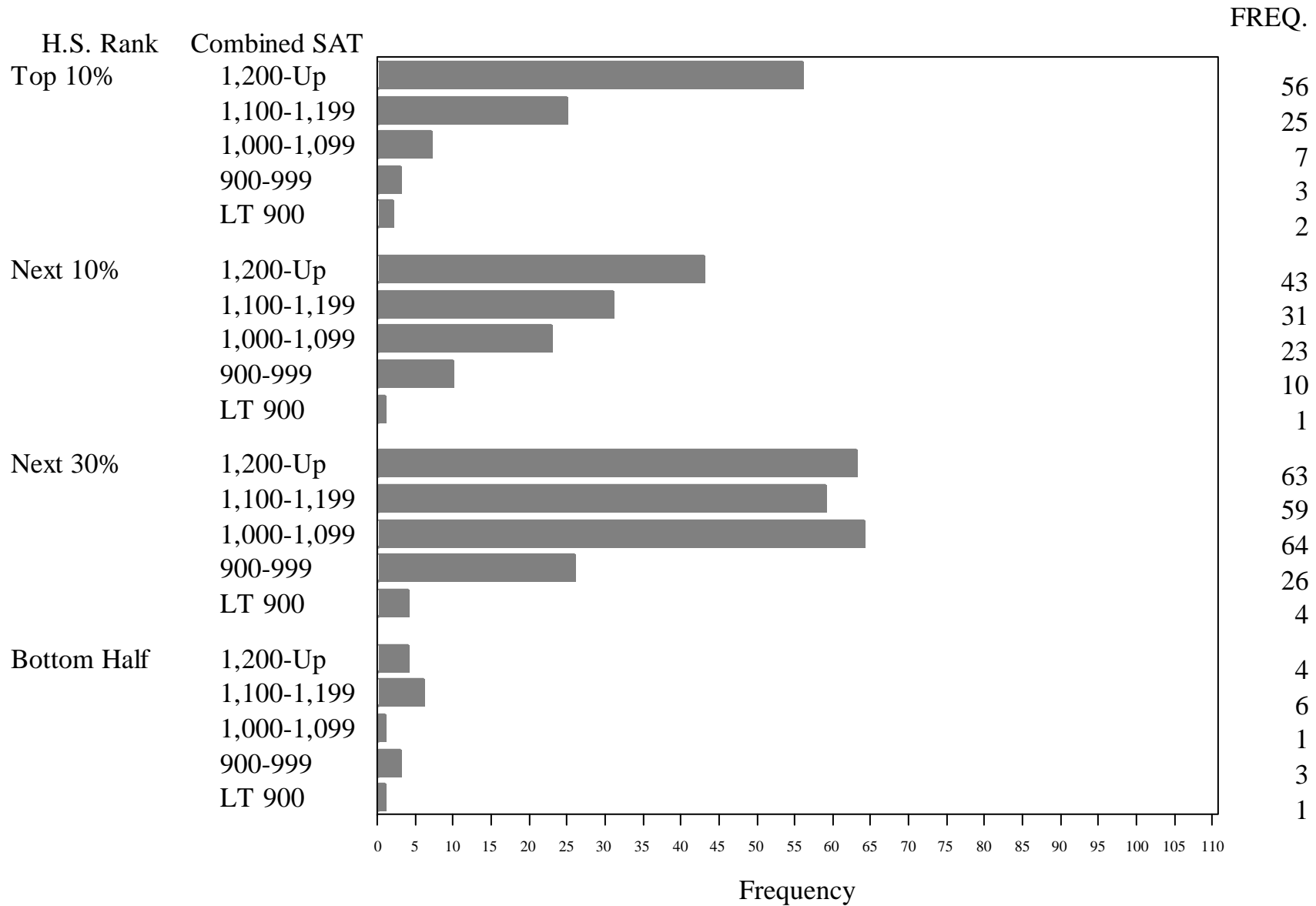


Table 5  
Percent of New Freshmen in Top 20% of High School Class  
by UNC Institution

UNC School	1996	1997	1998	1999	2000	2001	2002	2003	2004	2005	2006	2007	2008
UNCCH	90	88	88	88	88	86	90	90	92	92	93	92	94
NCSU	59	57	61	67	67	64	68	71	74	68	69	67	71
UNCW	43	43	41	45	48	41	49	52	50	49	50	51	50
ASU	44	40	36	41	36	38	40	39	37	39	39	40	47
UNCA	52	52	53	52	51	54	49	45	45	54	45	45	47
UNCG	34	34	36	34	35	32	32	32	33	35	33	35	35
UNCSA*	27	33	27	35	33	33	40	42	20	30	30	34	33
UNCC	39	36	36	35	40	41	35	36	37	28	44	36	32
WCU	21	22	20	19	20	22	22	21	23	22	23	26	31
ECU	33	33	32	29	33	30	29	35	30	33	27	31	28
UNCP	28	30	27	26	23	23	21	25	24	23	23	24	24
NCAT	18	20	18	15	15	15	14	15	16	15	15	15	21
ECSU	20	14	11	12	12	13	14	14	13	13	13	17	18
NCCU	18	18	14	10	11	11	14	11	12	12	11	9	15
FSU	16	13	11	16	12	12	16	15	14	13	14	13	14
WSSU	13	11	10	9	17	13	12	11	11	13	14	14	13

\* Name change from NC School of the Arts to UNC School of the Arts

Source: *Statistical Abstract of Higher Education in NC*, Table 57

Table 6  
New Fall Transfer Enrollments by Institution Type

			2004		2005		2006		2007		2008	
			N	%	N	%	N	%	N	%	N	%
North Carolina	Public	Senior Institutions	31	13.7	37	12.8	46	15.1	37	12.9	40	13.5
		Community Colleges	110	48.5	138	47.9	147	48.2	142	49.5	156	52.5
	Private	Senior Institutions	14	6.2	16	5.6	23	7.5	20	7.0	18	6.1
		Junior Institutions	1	0.4	-	-	-	-	-	-	1	0.3
		Other	3	1.3	-	-	-	-	3	1.0	1	0.3
	Total		159	70.0	191	66.3	216	70.8	202	70.4	216	72.7
Out-of-State	Public	Senior Institutions	27	11.9	40	13.9	25	8.2	26	9.1	26	8.8
		Junior Institutions	21	9.3	30	10.4	38	12.5	33	11.5	26	8.8
		Other	1	0.4	1	0.3	-	-	-	-	1	0.3
	Private	Senior Institutions	13	5.7	20	6.9	20	6.6	20	7.0	20	6.7
		Junior Institutions	-	-	1	0.3	-	-	2	0.7	1	0.3
		Other	1	0.4	1	0.3	5	1.6	1	0.3	1	0.3
	Other	Foreign Institutions	5	2.2	4	1.4	-	-	3	1.0	3	1.0
		Unknown	-	-	-	-	1	0.3	-	-	3	1.0
	Total		68	30.0	97	33.7	89	29.2	85	29.6	81	27.3
Grand Total All Institutions			227	100.0	288	100.0	305	100.0	287	100.0	297	100.0

Table 7  
Source of New Undergraduate Transfer Students  
Fall 2008

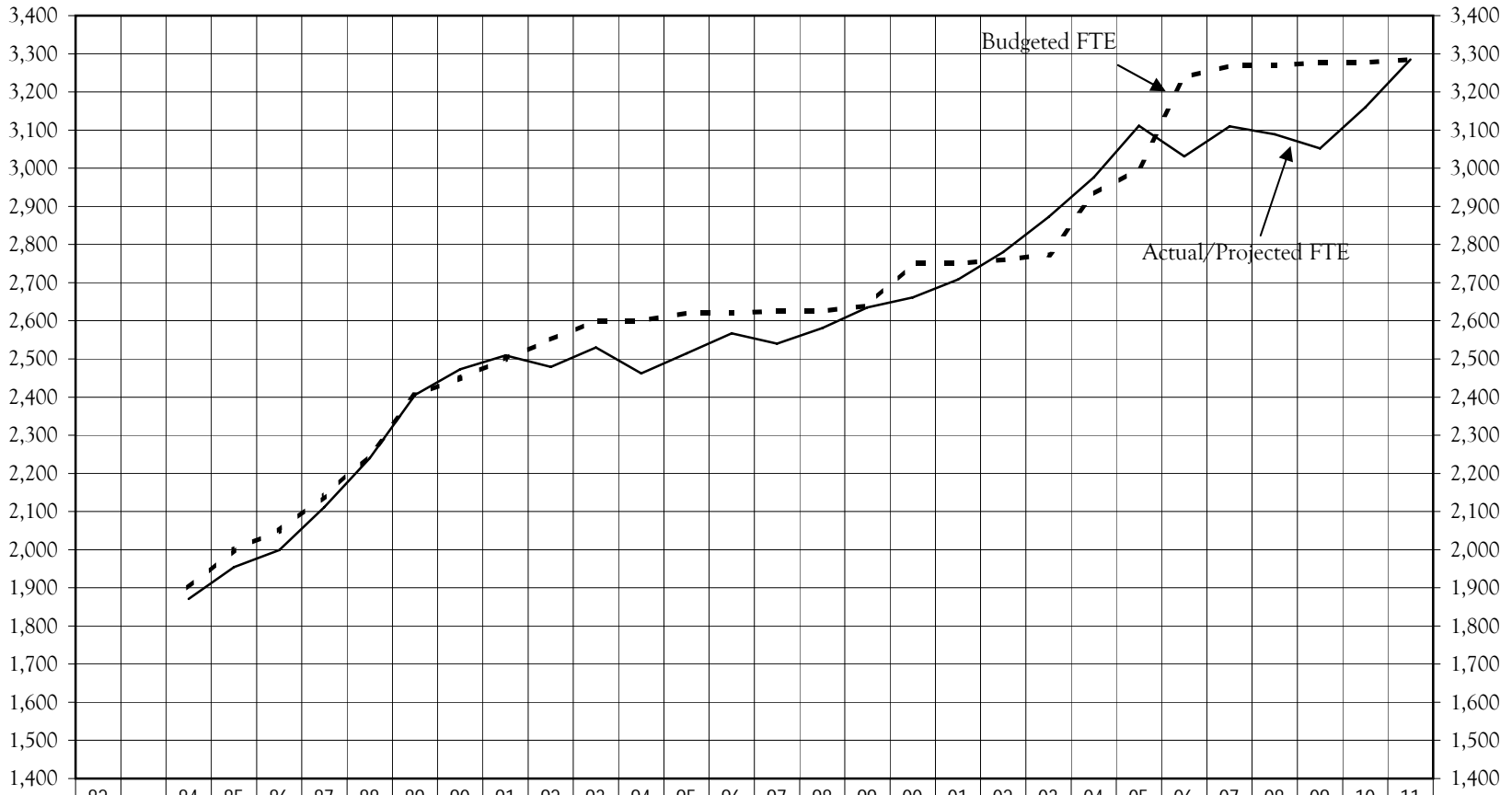
Institution	Apply	Accept	Enroll
Asheville - Buncombe Technical Community College	118	90	69
Blue Ridge Community College	18	15	10
Western Carolina University	14	9	9
Appalachian State University	14	9	7
Catawba Valley Community College	15	9	7
Isothermal Community College	10	8	6
University of North Carolina at Wilmington	16	13	6
University of North Carolina at Greensboro	11	9	5
Western Piedmont Community College	10	7	5
Caldwell Community College and Technical Institute	8	5	4
Cape Fear Community College	8	7	4
Forsyth Technical Community College	9	5	4
Gaston College	5	4	4
Haywood Community College	7	7	4
McDowell Technical Community College	9	8	4
Mitchell Community College	9	5	4
North Carolina State University	13	9	4
Sandhills Community College	6	5	4
Southwestern Community College	7	5	4
St. Andrews Presbyterian College	4	4	4
University of North Carolina at Chapel Hill	7	4	4
Warren Wilson College	9	6	4
Central Piedmont Community College	16	6	3
Durham Technical Community College	8	5	3
Wake Technical Community College	9	4	3
Other	193	148	112
Total			297

Note: Colleges enrolling fewer than three are counted in the "Other" category.  
Applications and Accepts counted only for colleges enrolling students.

Figure 4

Annual FTE History and Projections

FTE



--- Budgeted	1435	1900	2000	2050	2140	2249	2405	2450	2500	2550	2600	2600	2620	2620	2625	2625	2640	2750	2750	2760	2773	2932	2999	3238	3269	3269	3277	3277	3285
— Actual/Proj	1542	1871	1954	1999	2112	2240	2406	2473	2509	2479	2530	2462	2515	2567	2540	2581	2635	2661	2708	2780	2872	2976	3111	3031	3110	3089	3052	3160	3285

Academic Year Ending

Table 8  
Historical Resident Credit Enrollment Trends and Projections

Year	Fall						AY FTE			Budget Target	Year
	Headcount			FTE			Undergrad	Grad	Total		
	Undergrad	Grad	Total	Undergrad	Grad	Total					
1981-82	2,266		2,266	1,575		1,575	1,542		1,542	1,435	1981-82
1982-83	2,520		2,520	1,835		1,835	1,772		1,772	1,750	1982-83
1983-84	2,648		2,648	1,938		1,938	1,871		1,871	1,900	1983-84
1984-85	2,651		2,651	1,965		1,965	1,954		1,954	2,000	1984-85
1985-86	2,686		2,686	2,022		2,022	1,999		1,999	2,050	1985-86
1986-87	2,939		2,939	2,193		2,193	2,112		2,112	2,140	1986-87
1987-88	3,061		3,061	2,341		2,341	2,240		2,240	2,249	1987-88
1988-89	3,152		3,152	2,432		2,432	2,391	13	2,404	2,405	1988-89
1989-90	3,233	58	3,291	2,518	33	2,551	2,438	35	2,473	2,450	1989-90
1990-91	3,259	51	3,310	2,563	27	2,590	2,486	28	2,514	2,500	1990-91
1991-92	3,200	61	3,261	2,523	31	2,554	2,462	28	2,490	2,550	1991-92
1992-93	3,226	51	3,277	2,582	25	2,607	2,503	27	2,530	2,600	1992-93
1993-94	3,111	54	3,165	2,496	29	2,525	2,434	28	2,462	2,600	1993-94
1994-95	3,155	40	3,195	2,564	22	2,586	2,491	24	2,515	2,620	1994-95
1995-96	3,176	46	3,222	2,616	28	2,644	2,538	29	2,567	2,620	1995-96
1996-97	3,036	56	3,092	2,572	33	2,605	2,511	30	2,541	2,625	1996-97
1997-98	3,137	42	3,179	2,635	25	2,660	2,557	24	2,581	2,625	1997-98
1998-99	3,135	40	3,175	2,688	24	2,712	2,613	23	2,636	2,640	1998-99
1999-00	3,125	39	3,164	2,713	24	2,737	2,640	26	2,666	2,750	1999-00
2000-01	3,187	47	3,234	2,764	22	2,786	2,686	22	2,708	2,750	2000-01
2001-02	3,211	36	3,247	2,828	17	2,845	2,752	21	2,773	2,760	2001-02
2002-03	3,254	40	3,294	2,896	22	2,918	2,846	23	2,869	2,773	2002-03
2003-04	3,312	36	3,348	2,999	21	3,020	2,930	25	2,951	2,932	2003-04
2004-05	3,450	35	3,485	3,179	21	3,200	3,088	23	3,111	2,999	2004-05
2005-06	3,361	37	3,398	3,086	21	3,107	3,011	21	3,032	3,238	2005-06
2006-07	3,497	26	3,523	3,192	14	3,206	3,095	16	3,111	3,269	2006-07
2007-08	3,491	37	3,528	3,223	21	3,244	3,070	19	3,089	3,269	2007-08
2008-09	3,421	40	3,461	3,101	20	3,121	3,032	21	3,053	3,277	2008-09
2009-10	3,522	43	3,565	3,205	24	3,229	3,133	27	3,160	3,277	2009-10
2010-11	3,666	43	3,709	3,336	24	3,360	3,258	27	3,285	3,285	2010-11

Last Update: February 2, 2009

Table 9  
Student Credit Hours (SCH) by Funding Category: History and Projections

AY	Student Credit Hours						
	Undergraduate					Graduate	
	Category 1	Category 2	Category 3	Category 4	Total	Category 2	Total
1986-87	29,215	18,671	12,423	222	60,531		60,531
1987-88	31,491	19,125	13,096	216	63,928		63,928
1988-89	33,369	19,783	15,422	179	68,753	180	68,933
1989-90	33,112	20,029	16,252	198	69,591	465	70,056
1990-91	33,268	21,158	17,077	191	71,694	373	72,067
1991-92	31,675	21,115	18,859	267	71,916	393	72,309
1992-93	31,163	21,304	20,443	256	73,166	377	73,543
1993-94	31,002	20,715	20,034	249	72,000	338	72,338
1994-95	31,987	20,477	20,340	241	73,045	351	73,396
1995-96	33,075	20,019	20,626	271	73,991	420	74,411
1996-97	32,712	19,734	20,464	186	73,096	405	73,501
1997-98	33,693	20,010	20,218	278	74,199	387	74,586
1998-99	34,839	22,876	18,184	305	76,204	351	76,555
1999-00	34,469	19,847	22,016	413	76,745	363	77,108
2000-01	34,484	20,170	22,443	491	77,588	308	77,896
2001-02	35,003	21,006	23,240	161	79,410	305	79,715
2002-03	35,783	22,385	23,665	466	82,299	334	82,633
2003-04	38,454	23,152	23,391	637	85,634	307	85,941
2004-05	33,132	29,259	26,272	0	88,663	347	89,010
2005-06	33,402	26,024	28,089	27	87,542	312	87,854
2006-07	33,659	26,245	29,394	81	89,379	225	89,604
2007-08	33,666	26,023	29,664	200	89,553	275	89,828
2008-09	32,721	25,937	29,970	6	88,634	324	88,958
2009-10	34,215	26,448	30,148	203	91,014	371	91,385
2010-11	35,580	27,503	31,351	211	94,645	371	95,016

Last Update: February 3, 2009

#### Funding Categories

**Category 1:** Communication, English Literature and Language, Math, Philosophy and Religion, Psychology, Social Sciences, History

**Category 2:** Area Studies, Education<sup>1</sup>, Foreign Languages, Humanities, Interdisciplinary Studies, Liberal Studies, Business Management

**Category 3:** Biology, Computer Science, Environmental Science, Health Professions, Physical Sciences, Multimedia Arts and Sciences, Visual and Performing Arts

**Category 4:** Engineering

<sup>1</sup>Student teaching courses are counted as Category 3

Table 10  
Student Enrollment Demographic Profile  
Fall 2008

	Undergraduate							Graduate			Grand Total
	New Freshmen	Other Freshmen	Sophomores	Juniors	Seniors	Non-Degree	All	Masters Candidate	Special Graduate	All	
Full-Time	586	199	595	709	724	77	2,890	2		2	2,892
Part-Time		23	50	69	195	193	530	22	16	38	568
In State	486	177	559	682	812	228	2,944	24	16	40	2,984
Out of State	100	45	86	96	107	42	476				476
Male	225	98	280	313	401	97	1,414	9	6	15	1,429
Female	361	124	365	465	518	173	2,006	15	10	25	2,031
White	498	192	567	690	820	219	2,986	21	16	37	3,023
Black	23	9	19	20	19	8	98	1		1	99
Hispanic	30	5	19	16	20	6	96				96
Asian	11	3	8	14	10	2	48	1		1	49
Amer Indian	1		4		3		8				8
Other Minority	5	1	6	13	14	5	44				44
Race Unknown	15	7	18	21	27	8	96	1		1	97
International	3	5	4	4	6	22	44				44
Dorm Students	558	77	252	143	73	23	1,126				1,126
Headcount	586	222	645	778	919	270	3,420	24	16	40	3,460

Table 11  
Fall Enrolled Students by U.S. Region and State  
(International Students by Country)

		2006		2007		2008	
		Enrolled	%	Enrolled	%	Enrolled	%
The South	Alabama	15	0.4	17	0.5	18	0.5
	Arkansas	3	0.1	5	0.1	2	0.1
	Florida	45	1.3	41	1.2	41	1.2
	Georgia	66	1.9	66	1.9	60	1.7
	Kentucky	13	0.4	9	0.3	9	0.3
	Louisiana	7	0.2	4	0.1	2	0.1
	Mississippi	4	0.1	1	0.0	1	0.0
	North Carolina	2,951	84.4	3,008	85.3	2,981	86.2
	South Carolina	23	0.7	32	0.9	26	0.8
	Tennessee	47	1.3	35	1.0	38	1.1
	Virginia	65	1.9	57	1.6	45	1.3
	West Virginia	6	0.2	4	0.1	2	0.1
	Region Total	3,245	92.8	3,279	93.0	3,225	93.2
Mid-Atlantic	Delaware	1	0.0	1	0.0	0	0.0
	District of Columbia	3	0.1	4	0.1	3	0.1
	Maryland	16	0.5	22	0.6	24	0.7
	New Jersey	13	0.4	15	0.4	19	0.5
	New York	13	0.4	13	0.4	12	0.3
	Pennsylvania	31	0.9	24	0.7	26	0.8
	Region Total	77	2.2	79	2.2	84	2.4
New England	Connecticut	8	0.2	6	0.2	5	0.1
	Maine	4	0.1	2	0.1	2	0.1
	Massachusetts	8	0.2	10	0.3	7	0.2
	New Hampshire	3	0.1	1	0.0	2	0.1
	Rhode Island	0	0.0	1	0.0	3	0.1
	Vermont	4	0.1	4	0.1	3	0.1
	Region Total	27	0.8	24	0.7	22	0.6
Midwest	Illinois	19	0.5	14	0.4	15	0.4
	Indiana	7	0.2	6	0.2	6	0.2
	Iowa	2	0.1	1	0.0	1	0.0
	Kansas	2	0.1	3	0.1	1	0.0
	Michigan	8	0.2	6	0.2	7	0.2
	Minnesota	3	0.1	5	0.1	3	0.1
	Missouri	2	0.1	5	0.1	4	0.1
	Ohio	9	0.3	11	0.3	15	0.4
	Wisconsin	4	0.1	1	0.0	0	0.0
	Region Total	56	1.6	52	1.5	52	1.5
The Southwest	Arizona	3	0.1	2	0.1	0	0.0
	New Mexico	1	0.0	1	0.0	1	0.0
	Oklahoma	3	0.1	2	0.1	1	0.0
	Texas	14	0.4	12	0.3	8	0.2
	Region Total	21	0.6	17	0.5	10	0.3

Table 11  
Fall Enrolled Students by U.S.Region and State  
(International Students by Country)

		2006		2007		2008		
		Enrolled	%	Enrolled	%	Enrolled	%	
The West	Alaska	1	0.0	2	0.1	0	0.0	
	California	8	0.2	13	0.4	5	0.1	
	Colorado	7	0.2	3	0.1	1	0.0	
	Hawaii	1	0.0	0	0.0	0	0.0	
	Idaho	1	0.0	1	0.0	1	0.0	
	Montana	0	0.0	0	0.0	1	0.0	
	Nevada	1	0.0	2	0.1	2	0.1	
	Oregon	2	0.1	0	0.0	1	0.0	
	Utah	2	0.1	1	0.0	2	0.1	
	Washington	2	0.1	3	0.1	2	0.1	
	Wyoming	3	0.1	2	0.1	2	0.1	
	Region Total	28	0.8	27	0.8	17	0.5	
Unknown	Unknown	4	0.1	3	0.1	4	0.1	
Territories	Puerto Rico	0	0.0	1	0.0	2	0.1	
International	Australia	0	0.0	1	0.0	1	0.0	
	Bolivia	0	0.0	0	0.0	1	0.0	
	Brazil	2	0.1	3	0.1	2	0.1	
	Canada	4	0.1	4	0.1	3	0.1	
	Chile	0	0.0	1	0.0	1	0.0	
	China	1	0.0	0	0.0	1	0.0	
	Colombia	0	0.0	1	0.0	0	0.0	
	Denmark	1	0.0	0	0.0	2	0.1	
	Ecuador	1	0.0	0	0.0	0	0.0	
	Finland	1	0.0	1	0.0	1	0.0	
	France	5	0.1	5	0.1	8	0.2	
	Germany	3	0.1	3	0.1	6	0.2	
	Hong Kong (migration)	0	0.0	4	0.1	0	0.0	
	Italy	0	0.0	1	0.0	0	0.0	
	Japan	1	0.0	3	0.1	1	0.0	
	Mexico	3	0.1	6	0.2	3	0.1	
	New Zealand	1	0.0	1	0.0	0	0.0	
	Poland	0	0.0	0	0.0	1	0.0	
	Russia	4	0.1	0	0.0	1	0.0	
	South Africa	1	0.0	0	0.0	0	0.0	
	South Korea	2	0.1	3	0.1	3	0.1	
	Spain	2	0.1	0	0.0	0	0.0	
	Sweden	2	0.1	1	0.0	4	0.1	
	Switzerland	0	0.0	1	0.0	1	0.0	
	Turkey	1	0.0	0	0.0	1	0.0	
	United Kingdom	4	0.1	5	0.1	3	0.1	
	Unknown Country	0	0.0	1	0.0	0	0.0	
	Region Total	39	1.1	45	1.3	44	1.3	
	Total		3,497	100.0	3,527	100.0	3,460	100.0

Table 12  
Fall Enrolled Students by North Carolina Region and County

		2006		2007		2008	
		Enrolled	%	Enrolled	%	Enrolled	%
Western NC	Alleghany	1	0.0	2	0.1	3	0.1
	Ashe	8	0.3	5	0.2	5	0.2
	Avery	8	0.3	7	0.2	6	0.2
	Buncombe	1,138	38.6	1,098	36.5	1,085	36.4
	Burke	38	1.3	47	1.6	51	1.7
	Caldwell	17	0.6	16	0.5	11	0.4
	Cherokee	9	0.3	10	0.3	11	0.4
	Clay	9	0.3	7	0.2	11	0.4
	Graham	2	0.1	1	0.0	1	0.0
	Haywood	39	1.3	38	1.3	45	1.5
	Henderson	173	5.9	162	5.4	173	5.8
	Jackson	15	0.5	15	0.5	9	0.3
	Macon	12	0.4	18	0.6	13	0.4
	Madison	45	1.5	40	1.3	38	1.3
	McDowell	39	1.3	34	1.1	25	0.8
	Mitchell	3	0.1	7	0.2	8	0.3
	Polk	30	1.0	25	0.8	33	1.1
	Rutherford	32	1.1	39	1.3	39	1.3
	Surry	16	0.5	15	0.5	15	0.5
	Swain	5	0.2	11	0.4	9	0.3
	Transylvania	43	1.5	45	1.5	38	1.3
	Watauga	25	0.8	28	0.9	27	0.9
Wilkes	7	0.2	10	0.3	12	0.4	
Yancey	35	1.2	26	0.9	21	0.7	
Region Total		1,749	59.3	1,706	56.7	1,689	56.7
Piedmont NC	Alamance	17	0.6	16	0.5	14	0.5
	Alexander	3	0.1	4	0.1	1	0.0
	Anson	2	0.1	3	0.1	2	0.1
	Buncombe	0	0.0	2	0.1	0	0.0
	Cabarrus	16	0.5	18	0.6	20	0.7
	Caswell	2	0.1	1	0.0	1	0.0
	Catawba	42	1.4	44	1.5	48	1.6
	Chatham	26	0.9	26	0.9	26	0.9
	Cleveland	16	0.5	17	0.6	19	0.6
	Davidson	12	0.4	9	0.3	9	0.3
	Davie	11	0.4	13	0.4	11	0.4
	Durham	50	1.7	57	1.9	64	2.1
	Forsyth	106	3.6	104	3.5	100	3.4
	Franklin	7	0.2	5	0.2	6	0.2
	Gaston	25	0.8	28	0.9	28	0.9
	Granville	3	0.1	3	0.1	4	0.1
	Guilford	82	2.8	82	2.7	74	2.5
	Iredell	32	1.1	37	1.2	46	1.5
	Lee	3	0.1	2	0.1	4	0.1
	Lincoln	16	0.5	20	0.7	20	0.7
	Mecklenburg	154	5.2	157	5.2	148	5.0
	Montgomery	1	0.0	0	0.0	0	0.0
	Moore	11	0.4	14	0.5	12	0.4
	Orange	133	4.5	133	4.4	124	4.2
	Person	4	0.1	5	0.2	5	0.2
	Randolph	9	0.3	9	0.3	10	0.3
	Richmond	5	0.2	5	0.2	2	0.1
Rockingham	4	0.1	9	0.3	8	0.3	
Rowan	18	0.6	20	0.7	28	0.9	

Table 12  
Fall Enrolled Students by North Carolina Region and County

		2006		2007		2008	
		Enrolled	%	Enrolled	%	Enrolled	%
	Stanly	3	0.1	4	0.1	5	0.2
	Stokes	10	0.3	9	0.3	12	0.4
	Union	38	1.3	44	1.5	44	1.5
	Vance	5	0.2	3	0.1	3	0.1
	Wake	108	3.7	156	5.2	146	4.9
	Warren	0	0.0	0	0.0	2	0.1
	Yadkin	8	0.3	11	0.4	11	0.4
	Region Total	982	33.3	1,070	35.6	1,057	35.5
Eastern NC	Beaufort	1	0.0	1	0.0	2	0.1
	Brunswick	13	0.4	13	0.4	7	0.2
	Camden	2	0.1	0	0.0	1	0.0
	Carteret	9	0.3	12	0.4	5	0.2
	Columbus	1	0.0	0	0.0	0	0.0
	Craven	6	0.2	9	0.3	10	0.3
	Cumberland	11	0.4	11	0.4	10	0.3
	Currituck	3	0.1	3	0.1	3	0.1
	Dare	10	0.3	10	0.3	17	0.6
	Duplin	3	0.1	2	0.1	3	0.1
	Edgecombe	0	0.0	2	0.1	1	0.0
	Greene	0	0.0	0	0.0	1	0.0
	Halifax	0	0.0	0	0.0	1	0.0
	Harnett	57	1.9	57	1.9	59	2.0
	Hertford	1	0.0	1	0.0	1	0.0
	Hoke	2	0.1	1	0.0	1	0.0
	Hyde	1	0.0	1	0.0	1	0.0
	Johnston	3	0.1	3	0.1	5	0.2
	Lenoir	4	0.1	2	0.1	1	0.0
	Nash	13	0.4	10	0.3	6	0.2
	New Hanover	33	1.1	36	1.2	35	1.2
	Onslow	10	0.3	13	0.4	12	0.4
	Pamlico	1	0.0	1	0.0	1	0.0
	Pasquotank	2	0.1	4	0.1	5	0.2
	Pender	2	0.1	5	0.2	3	0.1
	Perquimans	1	0.0	1	0.0	0	0.0
	Pitt	12	0.4	11	0.4	16	0.5
	Robeson	2	0.1	1	0.0	1	0.0
	Sampson	1	0.0	3	0.1	5	0.2
	Scotland	3	0.1	5	0.2	6	0.2
	Tyrrell	0	0.0	1	0.0	1	0.0
	Washington	1	0.0	1	0.0	1	0.0
Wayne	7	0.2	8	0.3	10	0.3	
Wilson	4	0.1	4	0.1	4	0.1	
Region Total	219	7.4	232	7.7	235	7.9	
Total		2,950	100.0	3,008	100.0	2,981	100.0

Table 13  
Minority Presence: Fall Semesters

	International		Black		Asian		Native American		Hispanic		Other Minority		White		Unknown		All	
	N	%	N	%	N	%	N	%	N	%	N	%	N	%	N	%	N	
New Freshmen	1999	7	1.5	7	1.5	8	1.7	3	0.7	7	1.5	3	0.7	418	90.9	7	1.5	460
	2000	8	1.6	15	3.0	5	1.0	1	0.2	5	1.0	7	1.4	457	91.2	3	0.6	501
	2001	5	1.1	18	4.0	8	1.8	3	0.7	7	1.5	5	1.1	404	88.8	5	1.1	455
	2002	3	0.7	11	2.6	5	1.2	2	0.5	5	1.2	9	2.1	389	90.9	4	0.9	428
	2003	9	1.5	18	3.0	8	1.3	3	0.5	8	1.3	6	1.0	544	90.8	3	0.5	599
	2004	4	0.6	19	2.7	6	0.8	2	0.3	13	1.8	16	2.3	635	89.8	12	1.7	707
	2005	3	0.6	11	2.3	10	2.1	1	0.2	9	1.9	11	2.3	419	88.8	8	1.7	472
	2006	8	1.4	15	2.6	5	0.9	1	0.2	10	1.7	4	0.7	508	88.8	21	3.7	572
	2007	3	0.5	22	3.8	12	2.1	4	0.7	17	2.9	7	1.2	492	85.3	20	3.5	577
	2008	3	0.5	23	3.9	11	1.9	1	0.2	30	5.1	5	0.9	498	85.0	15	2.6	586
New Transfers	1999	2	0.7	7	2.4	3	1.0	1	0.3	8	2.8	1	0.3	258	90.2	6	2.1	286
	2000	5	1.7	5	1.7	4	1.3	3	1.0	2	0.7	5	1.7	278	92.1	-	-	302
	2001	4	1.2	4	1.2	3	0.9	-	-	4	1.2	5	1.5	310	93.1	3	0.9	333
	2002	2	0.5	9	2.4	7	1.8	1	0.3	5	1.3	5	1.3	347	90.8	6	1.6	382
	2003	5	1.6	9	3.0	5	1.6	-	-	8	2.6	8	2.6	266	87.5	3	1.0	304
	2004	4	1.8	4	1.8	2	0.9	-	-	8	3.5	5	2.2	202	89.0	2	0.9	227
	2005	1	0.3	6	2.1	4	1.4	2	0.7	7	2.4	6	2.1	260	90.3	2	0.7	288
	2006	1	0.3	11	3.6	-	-	2	0.7	4	1.3	5	1.6	271	88.9	11	3.6	305
	2007	2	0.7	4	1.4	6	2.1	1	0.3	8	2.8	4	1.4	252	87.8	10	3.5	287
	2008	2	0.7	3	1.0	2	0.7	-	-	9	3.0	4	1.3	271	91.2	6	2.0	297
All Students	1999	38	1.2	98	3.1	33	1.0	13	0.4	42	1.3	21	0.7	2,904	91.8	15	0.5	3,164
	2000	44	1.4	94	2.9	37	1.1	17	0.5	41	1.3	27	0.8	2,955	91.4	19	0.6	3,234
	2001	41	1.3	88	2.7	43	1.3	17	0.5	45	1.4	36	1.1	2,948	90.8	29	0.9	3,247
	2002	31	0.9	69	2.1	48	1.5	17	0.5	45	1.4	42	1.3	3,006	91.3	36	1.1	3,294
	2003	42	1.3	78	2.3	52	1.6	13	0.4	53	1.6	45	1.3	3,027	90.4	38	1.1	3,348
	2004	47	1.3	94	2.7	45	1.3	10	0.3	58	1.7	55	1.6	3,140	90.0	39	1.1	3,488
	2005	41	1.2	76	2.2	51	1.5	9	0.3	55	1.6	56	1.6	3,062	90.1	48	1.4	3,398
	2006	39	1.1	88	2.5	38	1.1	12	0.3	57	1.6	53	1.5	3,135	89.6	75	2.1	3,497
	2007	45	1.3	106	3.0	47	1.3	11	0.3	71	2.0	49	1.4	3,113	88.3	85	2.4	3,527
	2008	44	1.3	99	2.9	49	1.4	8	0.2	96	2.8	44	1.3	3,023	87.4	97	2.8	3,460

International Students are not included in other race/ethnicity categories.

Table 14  
Distribution of Student Age by Class  
Fall 2008

	N	Age Group Percent				Age			
		LT 25	25-29	30-39	40-Up	Median	Mean	Min	Max
New Freshmen	586	100.0	0.0	0.0	0.0	18.0	18.0	17	22
Other Freshmen	222	92.8	2.7	2.7	1.8	19.0	20.4	17	49
Sophomores	645	93.5	3.7	2.2	0.6	19.0	20.4	17	50
Juniors	778	81.4	10.0	6.0	2.6	21.0	22.9	18	69
Seniors	919	71.1	14.1	10.7	4.0	22.0	24.7	20	66
Non-Degree	270	30.7	32.2	20.0	16.7	27.0	31.3	16	81
Masters Candidates	24	8.3	20.8	12.5	58.3	45.0	44.1	22	65
Special Graduate	16	12.5	18.8	6.3	62.5	44.5	43.6	23	76
Total	3,460	80.0	9.6	6.4	3.9	21.0	22.8	16	81

Table 15  
UNC System Undergraduate Student Demographic Comparisons  
Fall 2007

Institution	Percent Full-Time	Mean Age	Pct Home & Contig. Co.	Percent Out-of-State
Appalachian State	87.5	21	13.4	8.2
East Carolina	75.6	22	41.6	12.2
Elizabeth City State	85.4	23	27.8	14.4
Fayetteville State	70.4	26	65.5	5.5
NC A & T	83.6	22	32.2	23.1
NC Central	76.4	24	50.0	12.3
NC School of the Arts	79.8	21	18.5	54.9
NC State	78.7	22	36.5	7.8
UNC Asheville	80.4	24	42.2	13.4
UNC Chapel Hill	82.8	21	13.7	17.6
UNC Charlotte	73.3	23	55.1	10.1
UNC Greensboro	70.0	22	43.0	8.4
UNC Pembroke	70.9	25	58.5	4.8
UNC Wilmington	85.6	22	25.2	14.9
Western Carolina	73.2	23	21.1	8.0
Winston-Salem	86.0	25	42.9	7.8
UNC Total	78.2	22	34.0	11.5

Source: *Statistical Abstract of Higher Education in North Carolina*

Table 16  
Residence Halls and Number of Students Housed  
Fall 2008

Residence Hall	Men	Women	Total
Ashe Hall	0	25	25
Founders Hall	104	186	290
Governors Hall	89	100	189
Hoey Hall	0	25	25
Mills Hall	119	173	292
Moore Hall	29	0	29
Scott Hall	24	0	24
South Ridge Hall	47	63	110
West Ridge Hall	54	88	142
Total On Campus	466	660	1,126

Table 17  
Commuter vs Residence Hall Students  
(Undergraduate Degree-Seeking Students)

Fall Semester	Total Enrollment	Commuter	Res Hall	Percent Res Hall
1995	2,730	1,782	948	34.7
1996	2,657	1,711	946	35.6
1997	2,746	1,800	946	34.5
1998	2,769	1,806	963	34.8
1999	2,775	1,795	980	35.3
2000	2,818	1,804	1,014	36.0
2001	2,888	1,871	1,017	35.2
2002	2,974	1,991	983	33.1
2003	3,093	1,957	1,136	36.7
2004	3,246	1,969	1,277	39.3
2005	3,141	2,079	1,062	33.8
2006	3,239	2,180	1,059	32.7
2007	3,278	2,165	1,113	34.0
2008	3,173	2,047	1,126	35.5

Table 18  
Summer School Headcount Enrollment by Class: 10-Year Trend

	1999	2000	2001	2002	2003	2004	2005	2006	2007	2008
Freshman	44	47	42	37	55	50	43	24	42	51
Sophomore	114	126	110	108	111	139	116	119	102	81
Junior	195	185	200	221	239	222	211	193	185	200
Senior	287	302	300	270	282	322	289	319	342	320
Non-degree	64	68	35	46	36	59	64	54	53	39
Post-Bacc Certif	0	0	0	0	0	0	0	0	3	4
Post-Bacc Non-degree	13	14	11	7	6	12	7	7	6	6
Masters Candidate	3	4	10	7	1	6	4	1	0	2
Special Graduate	3	2	4	3	0	3	0	2	1	1
Teacher Certif	28	30	28	25	25	26	22	32	11	15
Visitor	94	78	90	102	79	113	88	89	80	70
Total	845	856	830	826	834	952	844	840	825	789

Table 19  
Summer School Headcount, FTE, and SCH Enrollment: 10-Year Trend

Year	Head- count	FTE	SCH
1999	845	339	3,990
2000	856	328	3,827
2001	830	327	3,825
2002	826	331	3,949
2003	834	344	4,165
2004	952	407	4,895
2005	844	346	5,200
2006	840	345	4,408
2007	825	350	4,185
2008	789	255	3,921

Table 20  
Distance Education Enrollments by Site

Site	2004-2005		2005-2006		2006-2007		2007-2008	
	Headct	SCH	Headct	SCH	Headct	SCH	Headct	SCH
AB Tech	14	44	1	4				
Asheville School	46	111	84	188	97	198	69	145
Buncombe County/Other	67	201						
Western Correctional Ctr., Morganton	90	175	80	148	101	231	230	470
AY Total	97	275	203	626	191	598	224	672

Table 21  
Distance Education SCH by Funding Category

		2002-03	2003-04	2004-05	2005-06	2006-07	2007-08	2008-09	2009-10	2010-11
Undergraduate Category 1	Gross	567	592	789	633	719	829			
	Fundable	314	295	313	350	419	394			
	Budgeted	400	288	288	250	250	264	498	625	635
	Difference	-86	7	25	100	169	130			
Undergraduate Category 2	Gross	138	103	85	226	304	349			
	Fundable	90	35	31	96	58	170			
	Budgeted	72	164	164	70	70	138	685	561	584
	Difference	18	-129	-133	26	-12	32			
Undergraduate Category 3	Gross	87	111	96	168	264	303			
	Fundable	0	0	0	0	24	62			
	Budgeted	188	0	0	0	0	0	150	161	163
	Difference	-188	0	0	0	24	62			
Masters Category 2	Gross									
	Fundable									
	Budgeted								60	60
	Difference									
Total	Gross	792	806	970	1,027	1,287	1,481			
	Fundable	404	330	344	446	501	626			
	Budgeted	660	452	452	320	320	402	1,333	1,407	1,442
	Difference	-256	-122	-108	126	181	224			

Notes: Fundable SCH does not include SCH generated through contractual relationships with other institutions.  
(e.g. Morganton Correctional Center)

Data are as of End of Term.

Table 22  
Retention of New Fall Entering *Full-time* Freshmen  
1998 - 2007 Cohorts

	Cohort		Years After Entry					
	Year	N	1	2	3	4	5	6
Retention Rate	1998	474	78.1	61.8	59.1	31.9	6.8	3.0
	1999	456	77.0	64.7	59.2	29.8	6.1	2.9
	2000	495	80.2	65.1	60.0	26.9	7.5	2.8
	2001	446	78.3	66.8	61.7	24.4	7.4	4.3
	2002	423	77.8	68.6	62.6	28.1	8.7	2.4
	2003	593	79.9	68.0	63.2	33.6	5.9	
	2004	698	76.4	63.2	59.3	27.5		
	2005	471	80.7	70.1	65.4			
	2006	569	76.3	63.4				
	2007	572	78.5					
Graduation Rate	1998	474	0.0	0.0	0.4	25.5	48.7	51.9
	1999	456	0.0	0.0	0.4	28.1	50.9	53.5
	2000	495	0.0	0.0	0.8	30.9	49.7	53.5
	2001	446	0.0	0.0	0.2	33.2	50.0	53.8
	2002	423	0.0	0.0	0.5	33.1	53.2	59.6
	2003	593	0.0	0.0	0.7	28.7	54.8	
	2004	698	0.0	0.0	0.9	29.8		
	2005	471	0.0	0.0	0.4			
	2006	569	0.0	0.0				
	2007	572	0.0					
Persistence Rate*	1998	474	78.1	61.8	59.5	57.4	55.5	54.9
	1999	456	77.0	64.7	59.6	57.9	56.8	56.4
	2000	495	80.2	65.1	60.8	57.8	57.2	56.4
	2001	446	78.3	66.8	61.9	57.6	57.4	58.1
	2002	423	77.8	68.6	63.1	61.2	61.9	61.9
	2003	593	79.9	68.0	63.9	62.2	60.5	
	2004	698	76.4	63.2	60.2	57.3		
	2005	471	80.7	70.1	65.8			
	2006	569	76.3	63.4				
	2007	572	78.5					

\*Persistence rate is the percentage of students that are enrolled or graduated.

Table 23  
Retention of New Fall Entering Transfers  
1998 - 2007

	Cohort		Years After Entry					
	Year	N	1	2	3	4	5	6
Retention Rate	1998	326	68.4	45.7	20.9	9.5	4.6	2.1
	1999	286	67.5	50.3	25.9	10.1	5.9	1.7
	2000	302	66.9	54.0	25.5	11.9	2.6	1.7
	2001	333	71.8	55.6	21.6	10.5	4.2	1.8
	2002	382	68.6	52.9	26.7	8.9	3.7	2.4
	2003	304	70.7	52.6	24.0	7.9	3.9	
	2004	227	73.1	53.7	18.5	5.3		
	2005	288	77.8	61.5	24.7			
	2006	305	75.7	60.0				
2007	287	78.0						
Graduation Rate	1998	326	0.3	12.0	31.6	42.3	46.6	48.8
	1999	286	0.0	8.7	30.4	43.4	49.7	52.1
	2000	302	0.3	8.3	32.8	46.4	53.6	54.6
	2001	333	0.0	10.5	39.9	50.2	56.2	58.0
	2002	382	0.0	7.6	29.6	46.1	51.8	53.9
	2003	304	0.3	9.5	35.5	50.0	53.6	
	2004	227	0.0	8.8	39.6	53.7		
	2005	288	0.0	9.0	39.9			
	2006	305	0.0	5.9				
2007	287	0.0						
Persistence Rate*	1998	326	68.7	57.7	52.5	51.8	51.2	50.9
	1999	286	67.5	59.1	55.9	53.5	55.2	53.8
	2000	302	67.2	62.3	58.3	58.3	56.3	56.3
	2001	333	71.8	66.1	61.6	60.7	60.1	59.8
	2002	382	68.6	60.5	56.3	55.0	55.5	56.3
	2003	304	71.1	62.2	59.5	57.9	57.6	
	2004	227	73.1	62.6	58.1	59.0		
	2005	288	77.8	70.5	64.6			
	2006	305	75.7	65.9				
2007	287	78.0						

\*Persistence rate is the percentage of students that are enrolled or graduated.

Table 24  
Academic Program Inventory: Fall 2008

Discipline Division, CIP Code, Discipline Specialty, Degree Abbreviation, and Degree Program Title	
<b>Natural Resources and Conservation</b>	
03.0103	<i>Environmental Studies</i>
BS	Environmental Science/Studies
<b>Women's Studies</b>	
05.0207	<i>Women's Studies</i>
BA	Women's Studies
<b>Communication, Journalism, and Related Programs</b>	
09.0102	<i>Mass Communication/Media Studies</i>
BA	Journalism and Mass Communication
<b>Computer &amp; Information Sciences &amp; Support Services</b>	
11.0701	<i>Computer Science</i>
BS	Computer Science
11.0801	<i>Web Page, Digital/Multimedia &amp; Information Resources Design</i>
BA	Multimedia Arts and Sciences
<b>Engineering</b>	
14.0101	<i>Engineering, General</i>
BS	Engineering (Joint w/UNCA & NCSU)
<b>Foreign Languages, Literatures and Linguistics</b>	
16.0501	<i>German Language and Literature</i>
BA	German
BA	German with Teacher Licensure
16.0901	<i>French Language and Literature</i>
BA	French
BA	French with Teacher Licensure
16.0905	<i>Spanish Language and Literature</i>
BA	Spanish
BA	Spanish with Teacher Licensure
16.1200	<i>Classics &amp; Classical Languages, Literatures &amp; Linguistics, Gen</i>
BA	Classics
BA	Classics with Teacher Licensure
<b>English Language and Literatures/Letters</b>	
23.0101	<i>English Language and Literature, General</i>
BA	English
BA	English with Teacher Licensure
<b>Liberal Arts &amp; Sciences, General Studies &amp; Humanities</b>	
24.0101	<i>Liberal Arts and Sciences/Liberal Studies</i>
BA	Interdisciplinary Studies
MA	Liberal Studies
<b>Biological and Biomedical Sciences</b>	
26.0101	<i>Biology/Biological Sciences, General</i>
BS	Biology
BS	Biology with Teacher Licensure
<b>Mathematics and Statistics</b>	
27.0101	<i>Mathematics, General</i>
BA	Mathematics
BA	Mathematics with Teacher Licensure
<b>Philosophy and Religious Studies</b>	
38.0101	<i>Philosophy</i>
BA	Philosophy
38.0201	<i>Religious Studies</i>
BA	Religious Studies
<b>Physical Sciences</b>	
40.0401	<i>Atmospheric Sciences and Meteorology, General</i>
BS	Atmospheric Science and Meteorology
40.0501	<i>Chemistry, General</i>
BA	Chemistry
BA	Chemistry with Teacher Licensure
BS	Chemistry
BS	Chemistry with Teacher Licensure
40.0801	<i>Physics, General</i>
BS	Physics
BS	Physics with Teacher Licensure
<b>Psychology</b>	
42.0101	<i>Psychology, General</i>
BA	Psychology
<b>Social Sciences</b>	
45.0601	<i>Economics, General</i>
BA	Economics
BA	Economics with Teacher Licensure in Social Studies
45.1001	<i>Political Science and Government, General</i>
BA	Political Science
BA	Political Science w/ Teacher Licensure in Social Studies
45.1101	<i>Sociology</i>
BA	Sociology
BA	Sociology with Teacher Licensure in Social Studies
<b>Visual and Performing Arts</b>	
50.0501	<i>Drama and Dramatics/Theater Arts, General</i>
BA	Drama
BA	Drama with Teacher Licensure
50.0701	<i>Art/Art Studies, General</i>
BA	Art
BA	Art with Teacher Licensure
50.0702	<i>Fine/Studio Arts, General</i>
BFA	Art
50.0901	<i>Music, General</i>
BA	Music
50.0999	<i>Music, Other</i>
BS	Music Technology
<b>Health Professions &amp; Related Sciences</b>	
51.2207	<i>Public Health Education and Promotion</i>
BS	Health and Wellness Promotion
<b>Business, Mgmt., Marketing &amp; Related Support Services</b>	
52.0201	<i>Business Administration and Management, General</i>
BS	Management
52.0205	<i>Operations Management and Supervision</i>
BS	Industrial and Engineering Management
52.0301	<i>Accounting</i>
BS	Accounting
<b>History</b>	
54.0101	<i>History, General</i>
BA	History
BA	History with Teacher Licensure in Social Studies

Table 25  
Enrollment by Major  
Degree Seeking Undergraduates - Spring Semester

Major	2004	2005	2006	2007	2008	5-Year % Change
Accounting	74	68	53	56	54	-27.0
Art	87	112	128	134	120	37.9
Atmospheric Sciences	35	39	44	52	37	5.7
Biology	96	101	107	109	97	1.0
Chemistry	33	43	44	34	19	-42.4
Classics	24	23	19	18	23	-4.2
Computer Science	55	60	49	28	19	-65.5
Drama	29	25	37	41	42	44.8
Economics	36	36	45	46	52	44.4
Education	69	68	90	99	90	30.4
Environmental Studies	128	108	129	134	138	7.8
French	10	18	20	18	15	50.0
German	15	11	10	9	5	-66.7
Health & Wellness Promotion			46	81	100	
History	104	82	88	93	103	-1.0
Industrial Engineering Mgmt	10	10	7	7	10	0
Interdisciplinary Studies	52	49	39	27	31	-40.4
Literature	122	142	142	154	150	23.0
Management	147	145	156	124	92	-37.4
Mass Communication	96	87	88	84	81	-15.6
Mathematics	59	69	83	80	81	37.3
Mechatronics	24	28	30	19	11	-54.2
Multimedia Arts & Sciences	61	59	70	71	70	14.8
Music	23	20	19	14	14	-39.1
Music Technology	20	24	21	19	27	35.0
Philosophy	30	30	36	39	28	-6.7
Physics	13	15	19	19	18	38.5
Political Science	54	58	68	71	76	40.7
Psychology	179	183	181	194	190	6.1
Sociology	54	56	64	80	73	35.2
Spanish	48	43	60	64	75	56.3
Women's Studies			10	8	10	

NOTE: Degree-seeking students *formally* admitted to the teacher licensure program are double counted in "Education" and their primary major.  
Students with double majors are counted in each major.

Table 26  
Degrees Conferred by Academic Area and Major

Academic Area	Major	2003-04		2004-05		2005-06		2006-07		2007-08	
		N	%	N	%	N	%	N	%	N	%
Social Sciences	Accounting	18	3.0	13	2.3	17	3.0	16	2.7	11	1.5
	Economics	18	3.0	12	2.1	9	1.6	15	2.6	16	2.2
	Health/Wellness Promotion					1	0.2	7	1.2	29	4.1
	Indus Engr Mgmt	3	0.5	4	0.7	3	0.5			2	0.3
	Management	56	9.4	63	10.9	37	6.6	58	10.0	55	7.7
	Mass Comm	47	7.9	42	7.3	32	5.7	38	6.5	47	6.6
	Political Sci	21	3.5	13	2.3	19	3.4	29	5.0	31	4.3
	Psychology	78	13.1	77	13.3	87	15.5	95	16.3	103	14.4
	Sociology	39	6.5	19	3.3	30	5.3	26	4.5	37	5.2
	Program Total		280	47.0	243	42.1	235	41.7	284	48.8	331
Natural Sciences	Atmospheric Sci	9	1.5	18	3.1	7	1.2	14	2.4	22	3.1
	Biology	23	3.9	33	5.7	31	5.5	31	5.3	37	5.2
	Chemistry	6	1.0	5	0.9	9	1.6	11	1.9	14	2.0
	Computer Sci	18	3.0	26	4.5	11	2.0	19	3.3	4	0.6
	Environ Studies	51	8.6	39	6.8	38	6.7	25	4.3	55	7.7
	Mathematics	9	1.5	20	3.5	22	3.9	24	4.1	21	2.9
	Multimedia	33	5.5	26	4.5	21	3.7	17	2.9	34	4.8
	Physics	3	0.5	4	0.7	5	0.9	2	0.3	8	1.1
	Program Total		152	25.5	171	29.6	144	25.6	143	24.6	195
Humanities	Art	21	3.5	20	3.5	44	7.8	35	6.0	42	5.9
	Classics	5	0.8	4	0.7	9	1.6	2	0.3	1	0.1
	Drama	11	1.8	14	2.4	4	0.7	10	1.7	14	2.0
	French	5	0.8	2	0.3	6	1.1	6	1.0	3	0.4
	German	3	0.5	4	0.7	6	1.1	4	0.7	2	0.3
	History	45	7.6	28	4.9	27	4.8	20	3.4	39	5.5
	Literature	27	4.5	49	8.5	42	7.5	52	8.9	58	8.1
	Music	8	1.3	9	1.6	6	1.1	11	1.9	5	0.7
	Music Technology	6	1.0	10	1.7	11	2.0	6	1.0	9	1.3
	Philosophy	5	0.8	8	1.4	10	1.8	9	1.5	6	0.8
	Spanish	29	4.9	17	2.9	16	2.8	17	2.9	26	3.6
Program Total		165	27.7	165	28.6	181	32.1	172	29.6	205	28.7
Interdisciplinary	Interdisp Studies	21	3.5	21	3.6	22	3.9	16	2.7	7	1.0
	Women's Studies					2	0.4	4	0.7	2	0.3
	Program Total		21	3.5	21	3.6	24	4.3	20	3.4	9
Graduate	Liberal Arts (MLA)	7	1.2	1	0.2	4	0.7	4	0.7	11	1.5
	University Total		596	100.0	577	100.0	563	100.0	582	100.0	715

Table 27  
Average Undergraduate Class Size  
(Fall Semesters)

	2004	2005	2006	2007	2008
Africana Studies	-	15.0	6.0	7.0	13.0
Art	14.8	15.5	15.1	15.8	14.5
Arts 310	20.9	22.2	17.0	17.6	17.6
Atmospheric Sciences	20.4	19.6	18.8	18.2	13.6
Biology	30.7	22.9	24.1	24.3	25.0
Chemistry	22.0	19.1	19.1	19.2	23.6
Classics	13.9	12.0	14.2	13.9	12.9
Computer Science	16.0	14.2	13.3	13.1	15.4
Drama	14.5	15.6	15.1	13.1	15.2
Economics	18.0	19.8	19.5	20.4	20.3
Education	16.9	18.6	13.9	17.1	15.9
Engineering	11.7	15.6	13.1	13.9	12.0
Environmental Studies	22.6	23.9	27.0	23.8	20.1
Foreign Languages	18.7	17.2	17.0	17.0	18.6
Health & Fitness	19.5	16.1	18.7	22.2	20.4
Health & Wellness	-	19.2	21.3	20.7	20.2
History	20.1	21.3	22.6	21.7	19.4
Honors Program	12.6	12.7	12.9	15.3	16.9
Humanities	20.1	19.7	19.7	20.9	20.6
Interdisciplinary Studies	17.8	18.3	16.5	11.0	14.0
International Studies	-	15.0	14.5	18.5	7.0
Liberal Studies	-	14.7	12.6	16.8	20.9
Literature	19.9	19.8	19.5	19.0	18.2
Management	16.9	18.2	18.2	17.5	18.8
Mass Communication	19.7	20.0	17.8	18.2	16.9
Mathematics	23.8	24.2	24.5	23.8	24.6
Multimedia Arts and Sciences	11.2	12.4	13.6	12.5	13.3
Music	14.7	13.0	13.4	15.2	13.1
Philosophy	21.0	20.2	16.6	22.4	22.9
Physics	42.1	29.5	30.6	31.9	35.4
Political Science	19.4	19.1	20.7	22.6	18.4
Psychology	24.7	24.7	24.7	24.3	21.8
Religious Studies	-	-	-	-	15.0
Sociology	22.3	22.3	21.7	21.7	22.7
Women's Studies	17.5	18.0	17.0	18.0	22.5
Total University	19.6	19.2	19.0	19.4	19.1

Table 28  
Grade Distribution by Course Level and Academic Year

Level	Acad Year Ending	N Grades	Weighted GPA	Grade											
				A %	A- %	B+ %	B %	B- %	C+ %	C %	C- %	D+ %	D %	F %	
100	1999	8,924	2.77	34.0			35.1				19.2			5.3	6.4
	2000	9,004	2.80	34.8			35.6			18.1			4.5	7.0	
	2001	9,192	2.78	34.5			34.8			19.0			5.3	6.4	
	2002	9,256	2.87	38.9			33.3			17.5			4.7	5.7	
	2003	9,322	2.82	30.8	7.4	6.5	22.0	4.5	3.7	11.8	1.7	0.4	4.0	7.2	
	2004	10,311	2.82	27.0	9.4	7.6	21.3	6.2	4.3	10.9	2.2	0.7	4.0	6.4	
	2005	10,902	2.85	27.4	10.1	8.4	19.8	6.6	4.1	10.2	2.8	0.7	3.7	6.2	
	2006	9,403	2.93	29.5	10.8	8.6	19.0	6.6	4.4	9.1	2.7	0.7	3.6	4.9	
	2007	10,156	2.87	27.3	11.1	8.2	19.0	7.0	4.5	9.5	3.0	0.8	4.0	5.7	
2008	10,055	2.89	27.8	11.5	9.4	18.0	6.4	4.8	9.1	2.9	1.0	3.7	5.4		
200	1999	4,357	2.81	31.9			37.6			18.4			5.7	6.3	
	2000	4,244	2.85	32.9			37.6			19.2			4.7	5.6	
	2001	4,373	2.84	33.4			36.5			18.9			5.1	6.1	
	2002	4,368	2.97	38.4			36.3			16.8			4.3	4.2	
	2003	4,659	2.95	30.2	9.3	7.6	22.4	4.7	3.6	11.3	1.8	0.3	3.7	5.1	
	2004	4,693	2.96	29.5	11.0	8.6	20.8	5.2	3.8	9.3	2.0	0.5	3.7	5.6	
	2005	4,672	2.99	29.6	11.4	8.8	21.3	5.2	3.9	9.3	2.3	0.5	3.1	4.7	
	2006	5,152	3.03	31.0	11.9	8.8	18.7	6.7	4.0	8.8	2.1	0.9	2.9	4.3	
	2007	5,126	2.96	28.5	12.1	10.1	17.7	6.5	3.7	8.9	2.6	0.8	3.9	5.2	
2008	4,918	2.97	27.2	12.2	10.2	18.0	7.1	4.6	9.6	2.5	0.9	3.0	4.7		
300	1999	6,798	3.05	42.6			35.6			14.7			2.8	4.3	
	2000	7,156	3.09	43.2			36.4			14.2			2.4	3.8	
	2001	7,125	3.09	42.5			37.3			14.0			2.3	3.8	
	2002	7,722	3.16	46.7			35.0			12.5			2.2	3.6	
	2003	7,980	3.15	37.3	9.6	7.9	22.0	4.9	2.7	8.4	1.5	0.3	2.0	3.4	
	2004	8,087	3.19	39.2	10.5	7.9	21.7	4.0	2.6	7.2	1.4	0.3	1.9	3.4	
	2005	8,216	3.22	39.1	11.5	8.4	20.3	5.0	2.6	6.7	1.0	0.3	1.8	3.2	
	2006	8,954	3.22	37.1	13.6	9.5	19.0	5.0	3.0	5.9	1.7	0.3	1.5	3.4	
	2007	9,284	3.17	32.8	15.2	10.8	17.9	6.6	3.2	5.8	1.8	0.4	2.1	3.4	
2008	9,224	3.19	33.2	15.0	11.1	17.9	6.1	3.4	6.1	2.0	0.4	1.5	3.3		
400	1999	2,189	3.21	47.1			35.4			12.7			1.4	3.3	
	2000	2,190	3.26	50.0			33.4			12.8			1.6	2.3	
	2001	2,141	3.28	51.6			32.8		0.0	11.4			1.2	3.0	
	2002	2,374	3.27	50.8		0.0	33.2			11.5			2.2	2.2	
	2003	2,637	3.25	41.7	11.5	8.0	19.2	4.2	2.2	7.2	1.0	0.2	1.1	3.8	
	2004	2,851	3.31	43.6	10.8	8.3	19.0	4.6	2.2	6.3	1.1	0.1	1.3	2.7	
	2005	2,836	3.33	45.7	9.9	8.3	17.4	4.4	3.0	6.6	0.8	0.0	1.5	2.4	
	2006	2,713	3.31	43.9	13.1	7.5	16.5	4.6	2.1	6.4	1.1	0.1	1.5	3.2	
	2007	2,759	3.35	43.2	14.0	8.2	16.3	4.5	3.1	6.0	1.4	0.3	1.2	2.0	
2008	3,007	3.29	40.3	12.0	9.7	17.9	5.2	3.2	6.4	1.3	0.5	1.0	2.5		
500+	1999	93	3.58	64.5			31.2			3.2				1.1	
	2000	91	3.38	57.1			35.2			2.2				5.5	
	2001	74	3.55	66.2			27.0			4.1			1.4	1.4	
	2002	73	3.55	65.8			30.1			1.4				2.7	
	2003	77	3.43	55.8	6.5	11.7	14.3	1.3	2.6	1.3	1.3			5.2	
	2004	88	3.45	53.4	14.8	10.2	10.2	3.4	1.1		1.1			5.7	
	2005	100	3.47	54.0	17.0	10.0	10.0	1.0		2.0				6.0	
	2006	89	3.46	49.4	16.9	7.9	13.5	5.6	2.2					4.5	
	2007	56	3.57	48.2	19.6	5.4	16.1	5.4	3.6	1.8					
2008	75	3.55	61.3	9.3	9.3	12.0	1.3	1.3		1.3			4.0		
All	1999	22,361	2.91	37.6			35.8			17.0			4.2	5.4	
	2000	22,685	2.95	38.6			36.0			16.5			3.6	5.3	
	2001	22,905	2.94	38.5			35.7		0.0	16.7			3.9	5.2	
	2002	23,793	3.02	42.6		0.0	34.4			15.1			3.5	4.4	
	2003	24,675	3.00	34.1	8.9	7.3	21.8	4.6	3.2	10.1	1.6	0.3	3.0	5.2	
	2004	26,030	3.01	33.2	10.2	8.0	21.0	5.2	3.5	8.9	1.8	0.4	3.0	4.9	
	2005	26,726	3.04	33.4	10.7	8.5	19.9	5.6	3.5	8.5	2.0	0.5	2.8	4.6	
	2006	26,311	3.08	33.9	12.2	8.8	18.7	5.9	3.6	7.7	2.1	0.5	2.5	4.1	
	2007	27,381	3.04	31.0	13.0	9.4	18.1	6.5	3.8	7.8	2.3	0.6	3.0	4.4	
2008	27,279	3.05	31.0	12.8	10.1	18.0	6.3	4.1	7.8	2.3	0.7	2.5	4.2		

Figure 5  
Weighted GPA by Academic Year and Course Level

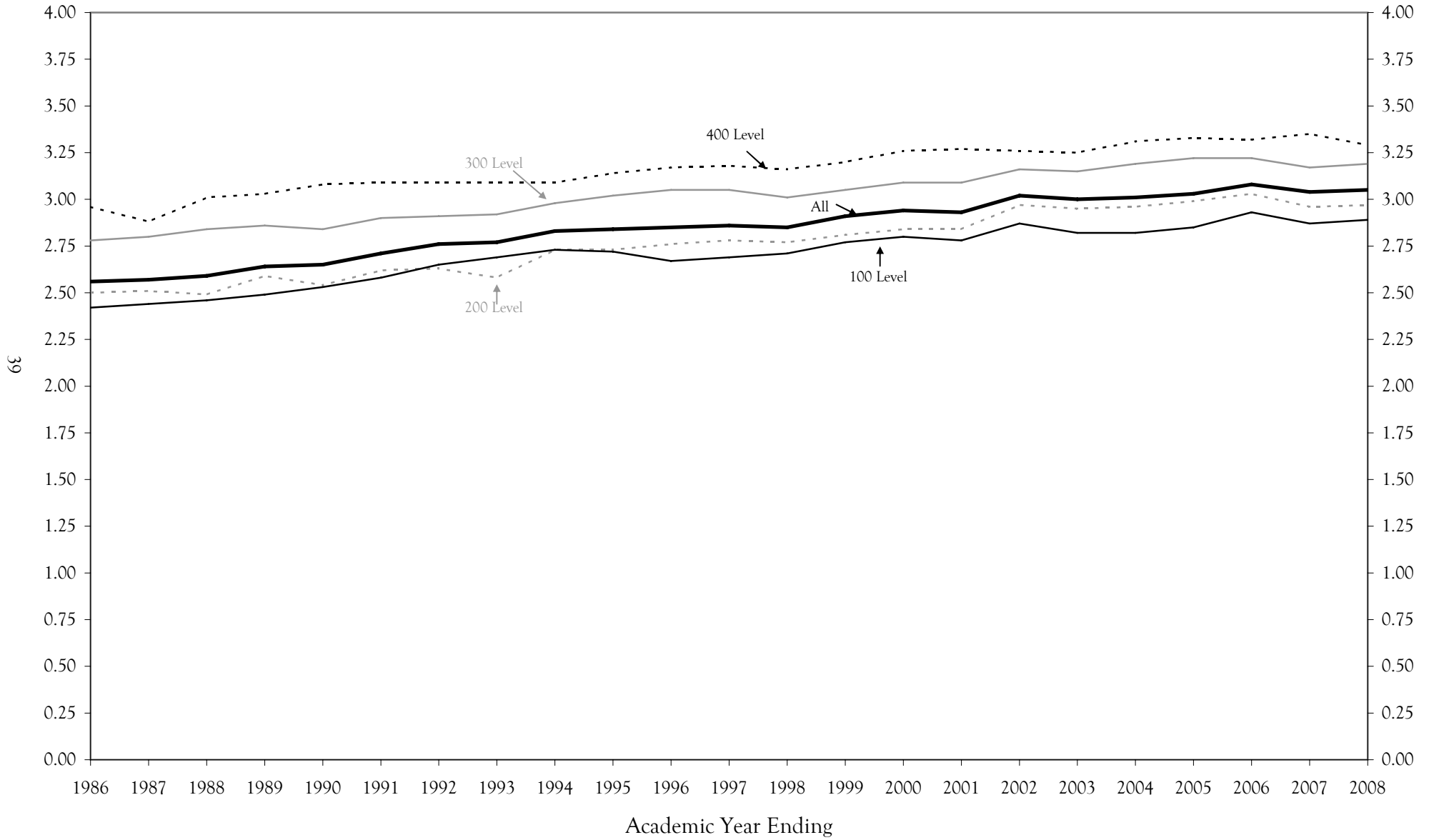


Table 29  
Intercollegiate Athletics  
Fall 2008

Teams	Men	Women	Last Champ.	Last Record		
				W	L	T
Baseball	31		2006	24	35	
Basketball Men	15		2008	23	10	
Basketball Women		13	2007	12	18	
Soccer Men	21		2001	7	8	4
Soccer Women		22	2006	5	14	1
Tennis Men	4		1986	5	10	0
Tennis Women		6	1989	3	15	0
Volleyball		12	2002	18	14	
Track Men	22			8th in Big South		
Track Women		20		8th in Big South		
Cross Country Men	12			5th in Big South		
Cross Country Women		16	1999	8th in Big South		

<b>Athletic Facilities</b>	<b>Seats</b>
Justice Center Gym (Basketball)	1,100
Greenwood Field (Soccer)	1,000
Greenwood Field (Baseball)	1,000

#### **National Collegiate Athletic Association Information**

NCAA Division I

Big South Conference

Nickname: Bulldogs

Colors: Royal Blue and White

#### **Big South Conference Members**

1. UNC Asheville
2. Charleston Southern University
3. Coastal Carolina University
4. Winthrop University
5. Radford University
6. Liberty University
7. Virginia Military Institute
8. High Point University
9. Presbyterian College
10. Gardner-Webb

Source: UNC Asheville Athletics

Table 30

Asheville Graduate Center  
Participating Universities and Program Offerings

**Appalachian State University**

Master of Arts in Educational Media, Instructional Technology/Computers  
Master of Library Science General, Concentration in School Libraries  
Graduate Certificate in Community and Regional Planning

**North Carolina State University**

Master of Engineering (various concentrations)  
Master of Civil Engineering  
Master of Science in Mechanical Engineering  
Master of Science in Aerospace Engineering  
Master of Science in Chemical Engineering  
Master of Computer Science

**University of North Carolina at Asheville**

Master of Liberal Arts

**University of North Carolina at Chapel Hill**

Master of Social Work

**University of North Carolina at Greensboro**

Master of Library and Information Studies

**Western Carolina University**

- Master of Accountancy
- Master of Arts in English  
TESOL (Teaching English to Speakers of Other Languages)
- Master of Arts in Education  
Comprehensive Education (7 concentrations)  
School Counseling  
Community College Teaching
- Master of Arts in Teaching  
Comprehensive Education (6 concentrations)
- Master of Education  
College of Student Personnel
- Master of Business Administration
- Master of Health Sciences (MAHEC)
- Master of Public Affairs
- Master of Science  
Community Counseling  
Mathematics (Applied)  
Technology (AB Tech)
- Master of Science in Nursing (Enka)
- Education Specialist  
Educational Leadership
- Doctor of Education  
Educational Leadership

Table 31

Asheville Graduate Center Fall Headcount Enrollments

School	1999	2000	2001	2002	2003	2004	2005	2006	2007	2008
NCSU	28	28	37	10	12	11	8			
UNCA	38	47	36	40	36	35	37	26	37	40
UNC CH	24	19	23	20	21	18	18	16	17	15
UNC G	29	31	31	30	37	20	7	15	14	9
ASU									22	35
WCU	569	581	706	728	815	771	593	521	468	462
Total	688	706	833	828	921	855	663	578	558	561

Table 32  
Summer Conferences

	2000	2001	2002	2003	2004	2005	2006	2007	2008
No. of Conferences	29	28	30	34	27	31	28	34	37
No. of Participants	3,083	2,842	2,406	3,796	3,010	2,945	1,659	2,502	3,259
No. of Dorm Beds	7,938	7,727	8,369	11,641	10,839	9,264	8,386	10,079	11,038

Source: Conferences & Institutes

Table 33  
Continuing Education Enrollments

	2000	2001	2002	2003	2004	2005	2006	2007	2008
Non-Credit & Professional Educ.	606	469	341	487	545	267	227	203	603
Super Saturday	1,165	1,199	1,385	1,525	1,399	1,211	1,406	1,181	979
NC Center for Creative Retirement*	1,965	2,039	2,179	1,984	2,399	2,225	2,920	3,012	3,103

\* Includes Leadership Asheville Seniors, Leadership Training for Older Persons, Blue Ridge Naturalist, Creative Retirement Exploration Weekend and other programs

Source: Extension & Distance Education, Education Super Saturday, & Center for Creative Retirement

Table 34

Student Financial Aid by Source  
Three-Year Trend

	2005-2006		2006-2007		2007-2008	
	Awards	Amount	Awards	Amount	Awards	Amount
<b>Federal Funds</b>						
Academic Competitiveness Grant			83	61,600	87	78,825
FDLP - PLUS	167	1,183,247	184	1,457,360	171	1,230,718
FDLP - Unsubsidized Stafford	840	2,922,483	877	3,095,745	920	3,357,689
FDLP - Subsidized Stafford	1,086	3,880,045	1,074	3,900,351	1,074	3,969,793
Federal Pell Grant	767	1,972,137	781	2,006,670	788	2,182,507
Federal Perkins Loan	114	375,093	55	185,393	60	215,833
Fed. Supplemental Ed. Opportunity Grant (SEOG)	153	80,009	137	84,150	98	43,500
Federal Veteran Educational Benefits	12	65,118	3	17,004	17	102,996
Federal Work Study (FWS)	76	136,317	70	90,840	57	131,720
Other Federal Scholarship or Grant	15	35,055	4	3,245	12	24,370
Smart Grant			27	86,000	18	63,466
Workforce Investment Act (WIA)	1	2,480				
<b>Sub-total</b>	<b>3,231</b>	<b>10,651,985</b>	<b>3,295</b>	<b>10,988,358</b>	<b>3,302</b>	<b>11,401,417</b>
<b>State Funds</b>						
Escheats	54	16,000	56	18,461	46	15,225
NC Division of Vocational Rehabilitation	21	48,056	7	8,544		
NC Scholarships for HSM (Forgivable loan)	9	14,235	13	27,150	17	36,915
NC Stud. Incent. Grant (Includes State Match)	62	41,300	47	30,100	49	29,948
NC Teaching Fellows Program (Forgivable loan)	60	342,800	64	372,100	83	490,468
Nurse Scholars Program (Forgivable loan)	1	5,000	1	5,000		
Other North Carolina Scholarship or Grant	508	287,458	479	303,874	692	606,828
Prospective Tchr. Scholarship Loan (Forgivable loan)	9	21,250	11	27,500	15	42,000
Teaching Assistant Scholarship Fund					1	2,450
UNC Campus Scholarship Program	4	4,445			2	4,500
UNC Need Based Grant	608	997,333	681	1,269,009	706	1,449,822
<b>Sub-total</b>	<b>1,336</b>	<b>1,777,876</b>	<b>1,359</b>	<b>2,061,738</b>	<b>1,611</b>	<b>2,678,157</b>
<b>Other Funds</b>						
Alternative Loan	91	674,393				
Athletic Grant-in-Aid	197	851,852	219	905,080	210	889,451
Extern. Admin. Pvt. Grant./Schlrshp. (Non-Athletic)	277	392,171				
Institutional Grant/Scholarship (Need Based)	1,062	722,261	1,118	1,506,932	1,025	1,052,382
Institutional Grant/Scholarship (Non-Need Based)	284	419,379	285	388,077	303	408,977
Institutionally-funded Tuition Waivers	1	834	15	12,510	15	12,093
<b>Sub-total</b>	<b>1,912</b>	<b>3,060,890</b>	<b>1,637</b>	<b>2,812,599</b>	<b>1,553</b>	<b>2,362,903</b>
<b>Total</b>	<b>6,479</b>	<b>15,490,750</b>	<b>6,291</b>	<b>15,862,696</b>	<b>6,466</b>	<b>16,442,477</b>

\* Not all dollars under Other Funds are awarded by the Office of Financial Aid.

Table 35

## Students Receiving Financial Aid

Fall	Financial Aid			Percent of Students Receiving				Average Award	Avg Pct of Need Met		
	Apps	Offers	Awards	Loans	Grants	Scholarships	Aid Total				
2006	New Freshmen	572	388	346	346	39.5	42.5	12.8	60.5	6,345	83.2
	New Transfers	305	210	201	201	53.4	54.8	4.6	65.9	8,506	81.0
	New Non-Degree	115	24	23	23	19.1	5.2	1.7	20.0	6,823	76.8
	New Graduates	1	0	0	0	0.0	0.0	0.0	0.0	0	0.0
	Returning	131	37	35	35	22.1	19.1	1.5	26.7	8,542	81.0
	Continuing	2,373	1,302	1,258	1,258	39.1	36.7	12.3	53.0	7,977	84.3
	Total	3,497	1,961	1,863	1,863	39.1	37.5	10.9	53.3	7,707	83.5
2007	New Freshmen	577	405	357	357	39.9	43.8	14.7	61.9	6,486	81.2
	New Transfers	287	195	192	192	53.3	56.8	3.1	66.9	8,441	78.6
	New Non-Degree	91	23	21	21	20.9	3.3	0.0	23.1	7,051	78.3
	New Graduates	14	3	1	1	7.1	0.0	0.0	7.1	3,500	89.6
	Returning	129	41	37	37	24.0	18.6	1.6	28.7	6,774	73.3
	Continuing	2,429	1,377	1,340	1,340	40.0	39.9	13.3	55.2	8,130	81.8
	Total	3,527	2,044	1,948	1,948	39.9	40.1	11.9	55.2	7,788	81.1
2008	New Freshmen	586	447	420	385	22.5	49.5	13.5	65.7	7,972	89.7
	New Transfers	297	187	180	173	34.0	47.1	1.3	58.2	10,097	82.0
	New Non-Degree	136	24	22	20	11.8	0.0	0.0	14.7	10,834	94.6
	New Graduates	19	1	1	1	0.0	5.3	0.0	5.3	1,152	7.8
	Returning	133	40	36	36	22.6	12.0	0.0	27.1	9,132	89.5
	Continuing	2,289	1,327	1,285	1,285	40.8	41.5	9.4	56.1	9,116	88.4
	Total	3,460	2,026	1,944	1,900	35.0	40.4	8.6	54.9	8,971	88.0

Table 36  
Intercollegiate Athletics Grants-In-Aid  
2008-2009

	Male	Female	Total
Athl Dir 3.0 Club	9,800	8,600	18,400
Athletic Training Rooms	300	900	1,200
Baseball	80,518	0	80,518
Basketball	162,878	163,655	326,533
Soccer	77,500	83,086	160,586
Tennis	38,848	63,893	102,741
Track	46,200	46,902	93,102
Volleyball	0	102,738	102,738
Total	416,044	469,776	885,819

Table 37  
Current Residence of Alumni by US Region, State and Nation

		2008	
		N	%
The South	Alabama	70	0.6
	Arkansas	25	0.2
	Florida	425	3.4
	Georgia	447	3.5
	Kentucky	43	0.3
	Louisiana	32	0.3
	Mississippi	21	0.2
	North Carolina	8,625	68.5
	South Carolina	442	3.5
	Tennessee	296	2.4
	Virginia	349	2.8
	West Virginia	26	0.2
	Region Total	10,801	85.8
Mid-Atlantic	Delaware	11	0.1
	District of Columbia	36	0.3
	Maryland	127	1.0
	New Jersey	52	0.4
	New York	163	1.3
	Pennsylvania	98	0.8
	Region Total	487	3.9
New England	Connecticut	35	0.3
	Maine	16	0.1
	Massachusetts	73	0.6
	New Hampshire	15	0.1
	Rhode Island	6	0.0
	Vermont	7	0.1
Region Total	152	1.2	
Midwest	Illinois	89	0.7
	Indiana	43	0.3
	Iowa	9	0.1
	Kansas	14	0.1
	Michigan	41	0.3
	Minnesota	33	0.3
	Missouri	32	0.3
	Nebraska	3	0.0
	North Dakota	5	0.0
	Ohio	76	0.6
	South Dakota	7	0.1
	Wisconsin	38	0.3
	Region Total	390	3.1
The Southwest	Arizona	49	0.4
	New Mexico	17	0.1
	Oklahoma	15	0.1
	Texas	141	1.1
	Region Total	222	1.8

Table 37  
Current Residence of Alumni by US Region, State and Nation

		2008	
		N	%
The West	Alaska	9	0.1
	California	168	1.3
	Colorado	106	0.8
	Hawaii	16	0.1
	Idaho	4	0.0
	Montana	15	0.1
	Nevada	14	0.1
	Oregon	60	0.5
	Utah	13	0.1
	Washington	74	0.6
	Wyoming	7	0.1
	Region Total	486	3.9
Territories	Puerto Rico	6	0.0
	Virgin Islands	1	0.0
	Region Total	7	0.1
International	Australia	3	0.0
	Canada	5	0.0
	Costa Rica	1	0.0
	Croatia	1	0.0
	Ecuador	4	0.0
	Egypt	2	0.0
	France	2	0.0
	Indonesia	1	0.0
	Jamaica	1	0.0
	Japan	5	0.0
	Kenya	1	0.0
	Malaysia	1	0.0
	Netherlands	1	0.0
	New Zealand	3	0.0
	Peru	1	0.0
	Singapore	1	0.0
	Spain	2	0.0
	Sweden	1	0.0
	Switzerland	1	0.0
	The Bahamas	1	0.0
	Turkey	3	0.0
	United Arab Emirates	1	0.0
	United Kingdom	6	0.0
	West Germany	2	0.0
	Region Total	50	0.4
	Total		12,595

Table 38  
Alumni by North Carolina Region and County

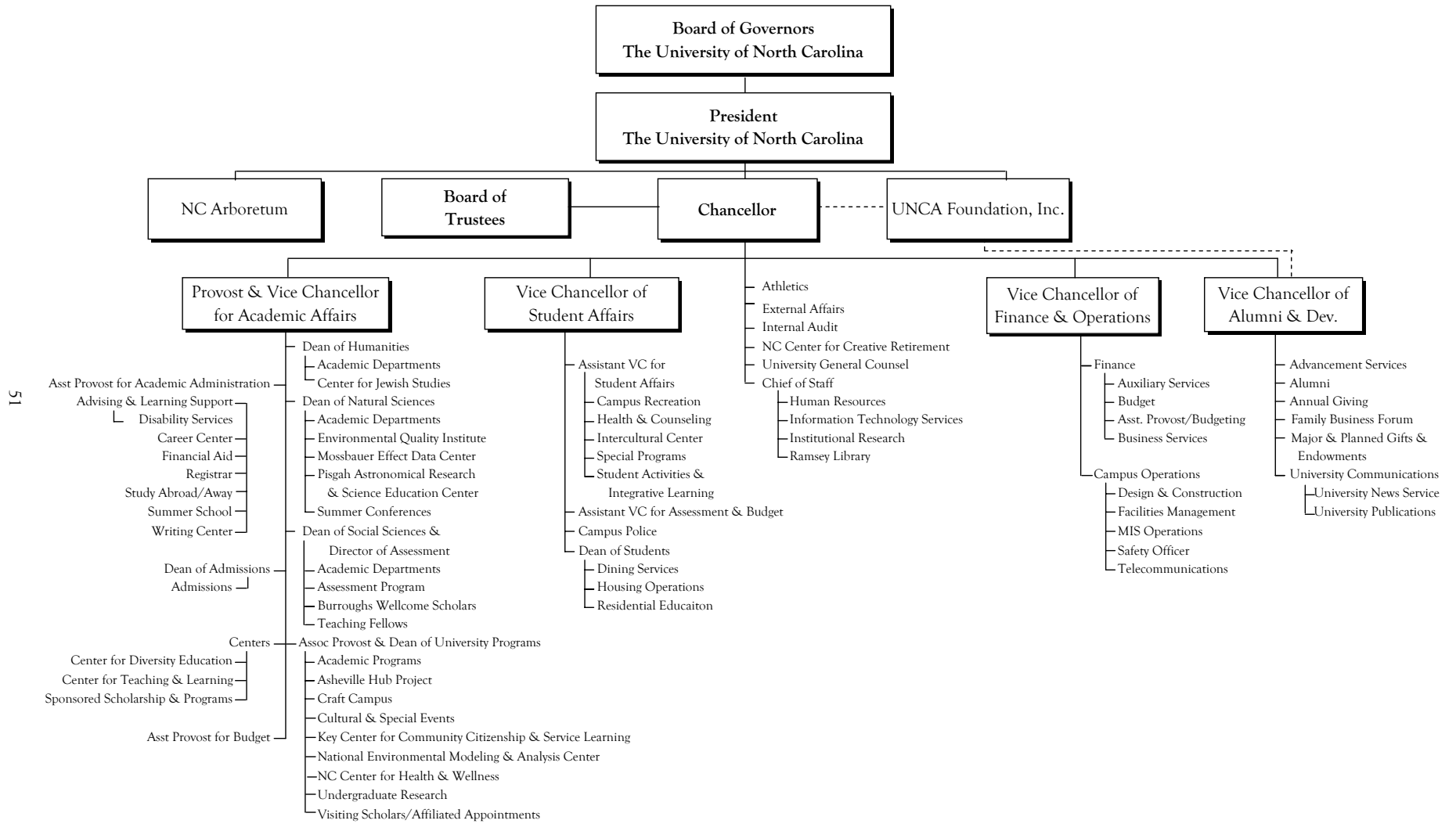
		N	%
Western NC	Alleghany	2	0.0
	Ashe	11	0.1
	Avery	13	0.2
	Buncombe	3,772	43.7
	Burke	95	1.1
	Caldwell	47	0.5
	Cherokee	50	0.6
	Clay	21	0.2
	Graham	6	0.1
	Haywood	207	2.4
	Henderson	876	10.2
	Jackson	54	0.6
	Macon	50	0.6
	Madison	124	1.4
	McDowell	173	2.0
	Mitchell	44	0.5
	Polk	93	1.1
	Rutherford	112	1.3
	Surry	23	0.3
	Swain	20	0.2
Transylvania	156	1.8	
Watauga	35	0.4	
Wilkes	27	0.3	
Yancey	83	1.0	
	Region Total	6,094	70.7
Piedmont NC	Alamance	28	0.3
	Alexander	17	0.2
	Anson	3	0.0
	Cabarrus	53	0.6
	Caswell	4	0.0
	Catawba	85	1.0
	Chatham	30	0.3
	Cleveland	58	0.7
	Davidson	32	0.4
	Davie	13	0.2
	Durham	148	1.7
	Forsyth	220	2.6
	Franklin	8	0.1
	Gaston	72	0.8
	Granville	5	0.1
	Guilford	198	2.3
	Iredell	58	0.7
	Lee	8	0.1
	Lincoln	36	0.4
	Mecklenburg	398	4.6
	Montgomery	3	0.0
	Moore	21	0.2
	Orange	141	1.6
	Person	4	0.0
Randolph	16	0.2	
Richmond	6	0.1	

Table 38  
Alumni by North Carolina Region and County

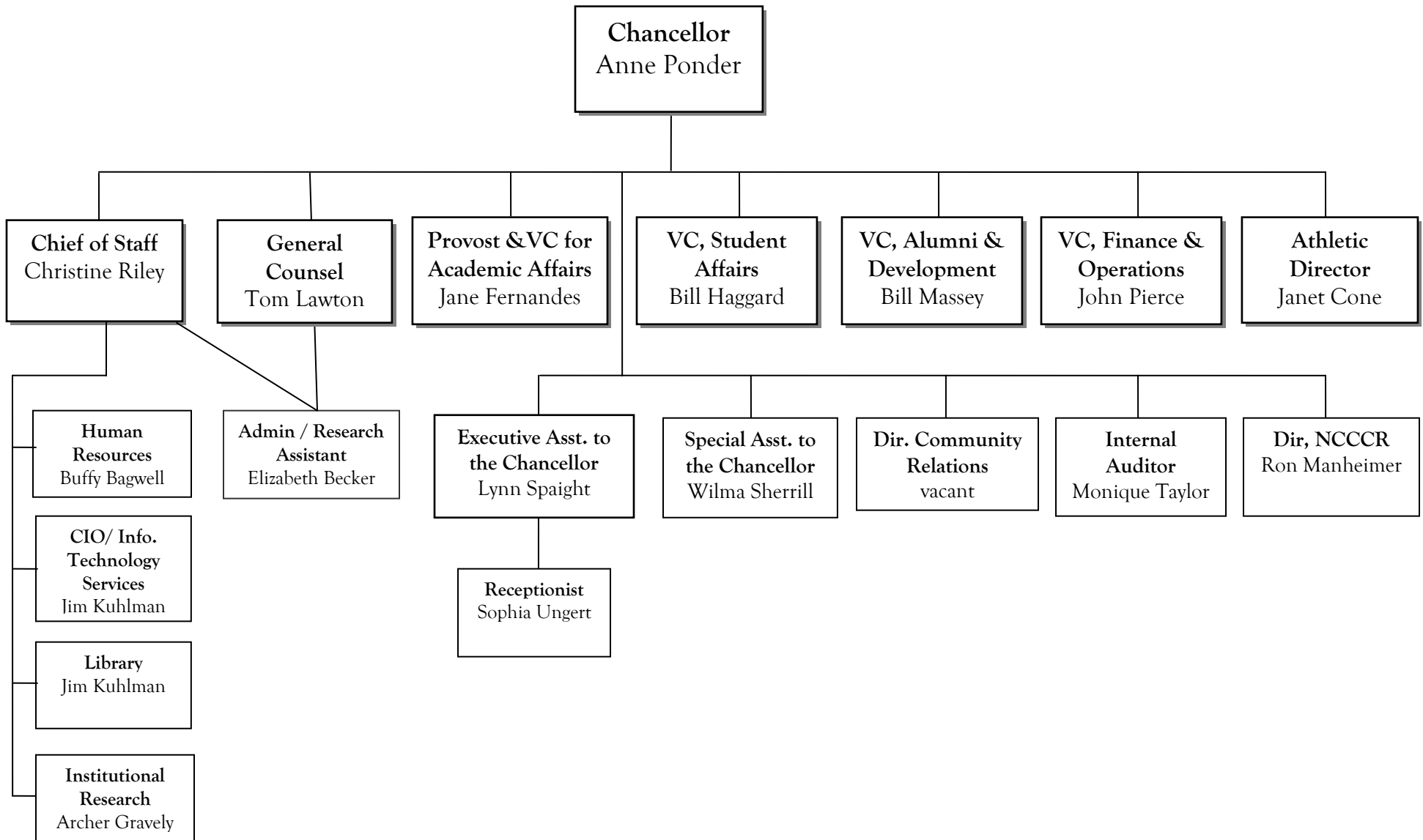
		N	%
	Rockingham	16	0.2
	Rowan	38	0.4
	Stanly	9	0.1
	Stokes	8	0.1
	Union	93	1.1
	Vance	2	0.0
	Wake	313	3.6
	Yadkin	10	0.1
	Region Total	2,154	25.0
Eastern NC	Beaufort	4	0.0
	Bladen	1	0.0
	Brunswick	17	0.2
	Camden	1	0.0
	Carteret	14	0.2
	Chowan	1	0.0
	Columbus	1	0.0
	Craven	13	0.2
	Cumberland	25	0.3
	Currituck	4	0.0
	Dare	4	0.0
	Duplin	3	0.0
	Edgecombe	3	0.0
	Greene	1	0.0
	Halifax	3	0.0
	Harnett	114	1.3
	Hertford	2	0.0
	Hoke	1	0.0
	Hyde	1	0.0
	Johnston	11	0.1
	Jones	1	0.0
	Lenoir	2	0.0
	Nash	5	0.1
	New Hanover	67	0.8
	Northampton	1	0.0
	Onslow	13	0.2
	Pamlico	3	0.0
	Pasquotank	1	0.0
	Pender	4	0.0
	Perquimans	1	0.0
	Pitt	30	0.3
	Robeson	3	0.0
	Sampson	2	0.0
	Scotland	1	0.0
	Washington	2	0.0
	Wayne	8	0.1
	Wilson	8	0.1
	Region Total	376	4.4
Total		8,625	100.0

## Faculty and Staff

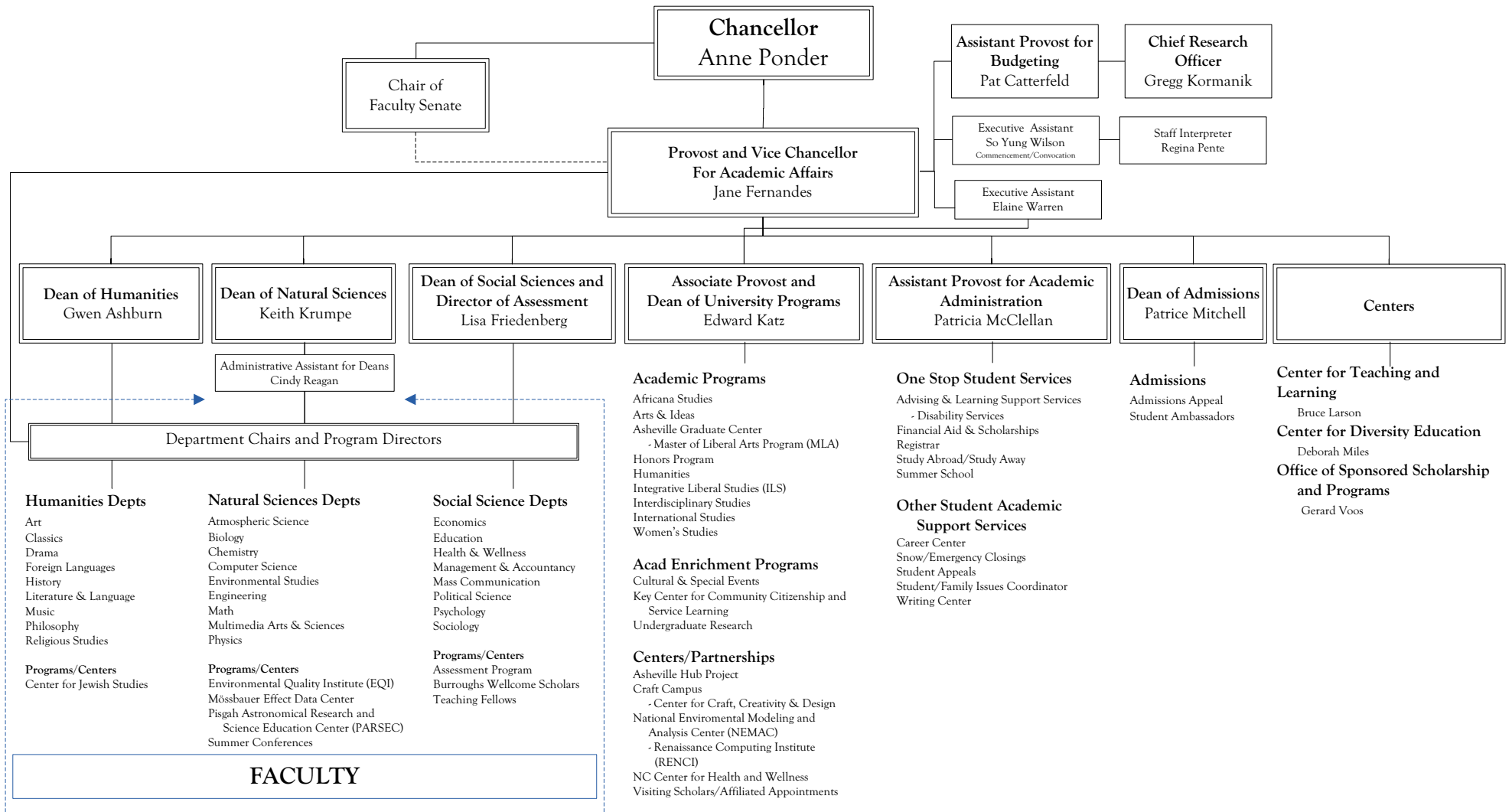
Figure 6  
UNC Asheville Organizational Chart: 2008-09



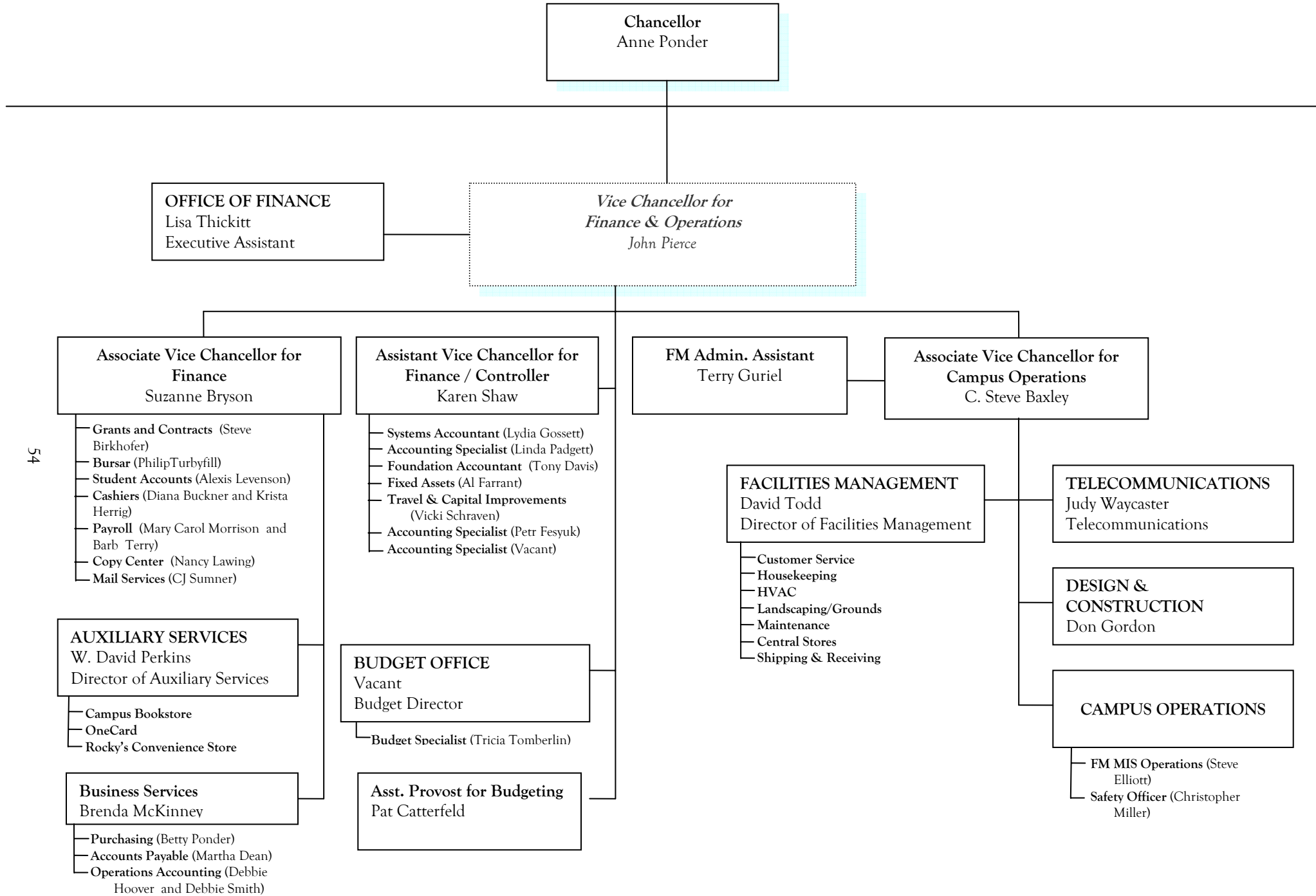
**Figure 7**  
**Chancellor's Division Organizational Chart: 2009**



**Figure 8**  
**Organizational Chart for Academic Affairs: 2009**

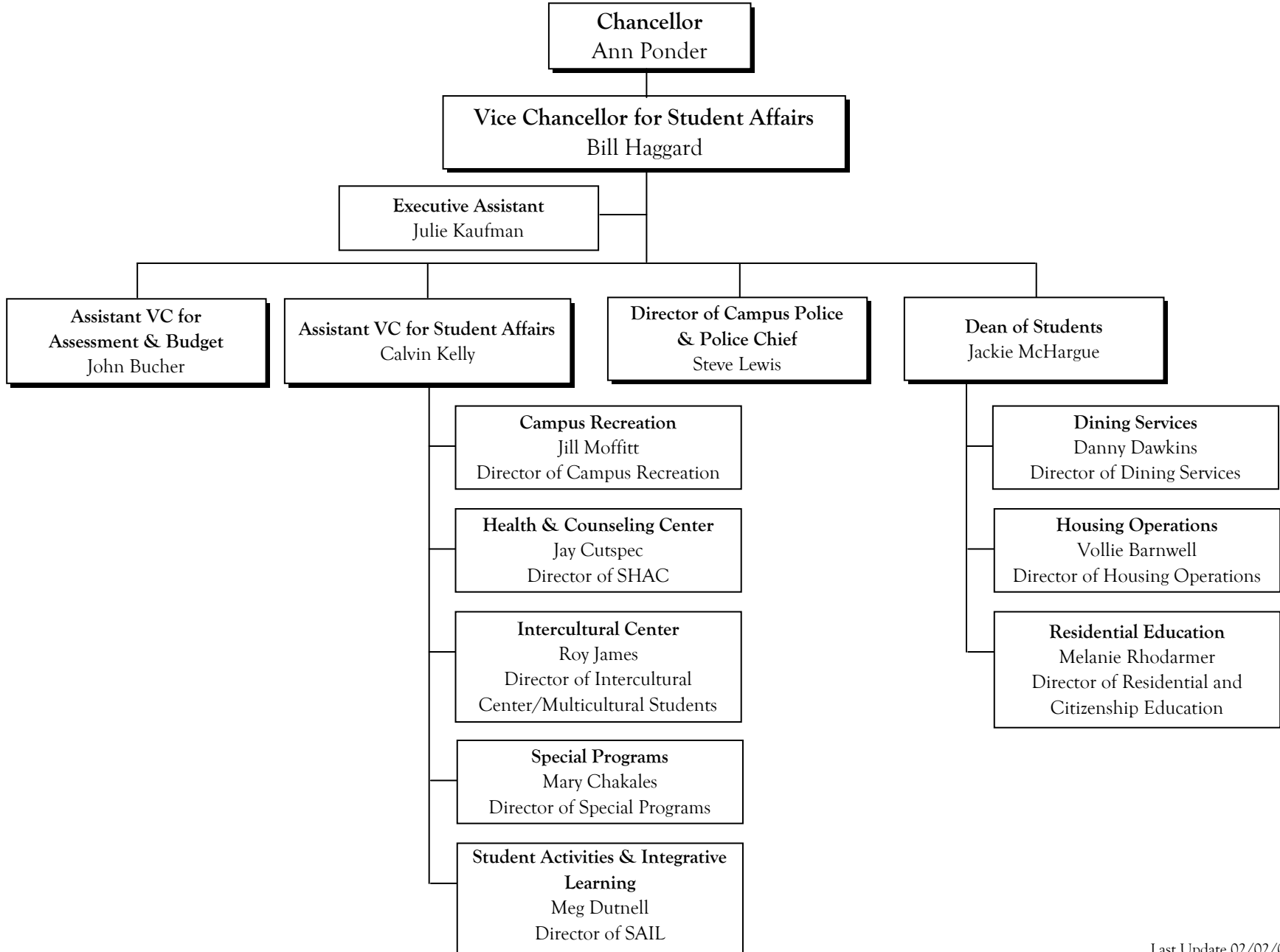


**Figure 9**  
**Finance & Operations Organizational Chart: 2009**



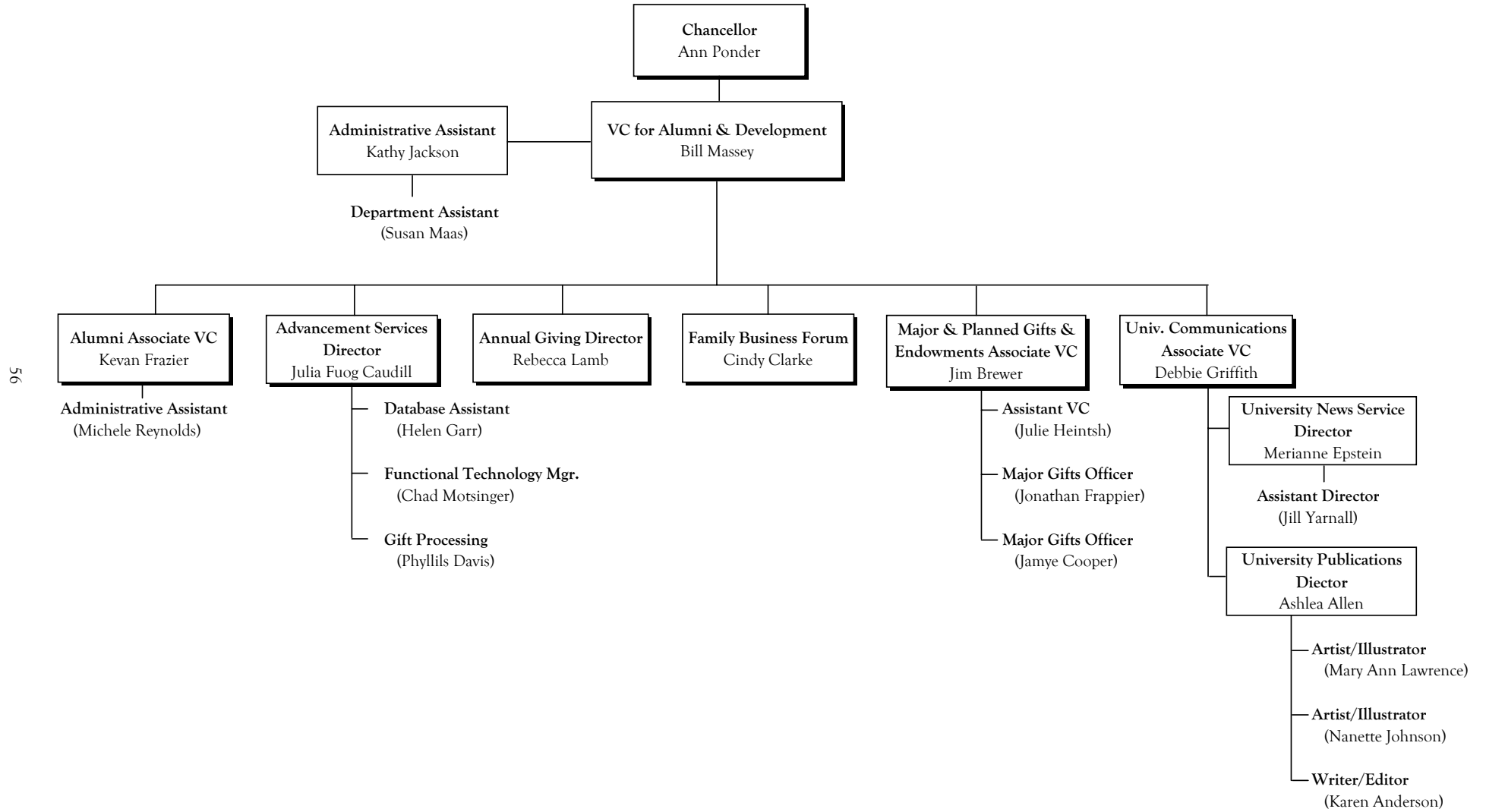
54

**Figure 10**  
Organizational Chart for Student Affairs



55

**Figure 11**  
Organizational Chart for Alumni & Development



56

Table 39

Organization and Personnel  
2008-09

**Office of the Chancellor**

Chancellor .....	Anne Ponder
Chief of Staff.....	Christine Riley
University General Counsel.....	Tom Lawton
Special Assistant to the Chancellor for External Affairs.....	Wilma Sherrill
Internal Auditor .....	Monique Taylor
Director of Athletics.....	Janet Cone
NC Center for Creative Retirement .....	Ron Manheimer
Director of Human Resources .....	Elizabeth Bagwell
Director of Institutional Research .....	Archer Gravely
Chief Information Officer & University Librarian .....	James Kuhlman

**Academic Affairs**

Provost and Vice Chancellor for Academic Affairs .....	Jane Fernandes
Associate Provost and Dean of University Programs .....	Edward Katz
Associate Provost for Academic Administration.....	Patricia McClellan
Assistant Provost for Budgeting .....	Pat Catterfeld
Dean of Admissions .....	Patrice Mitchell
Dean of Humanities.....	Gwen Ashburn
Dean of Natural Sciences.....	Keith Krumpe
Dean of Social Sciences and Director of Assessment .....	Lisa Friedenberg
Chief Research Officer.....	Gregg Kormanik
Director of Sponsored Scholarship & Programs .....	Gerard Voos
Director of the Center for Teaching and Learning .....	Bruce Larson
Director of the Center for Diversity Education.....	Deborah Miles

Academic Administration

Assistant Provost .....	Patricia McClellan
Director of Advising & Learning Support.....	Calley Stevens Taylor
Director of Career Center.....	Eileen Buecher
Registrar .....	Debbie Race
Director of Study Abroad/Study Away Programs.....	Bonnie Parker
Director of Writing Center.....	Mary Alm

Humanities

Dean .....	Gwen Ashburn
Chair of Art.....	Robert Dunning
Chair of Classics .....	Sophie Mills
Chair of Drama .....	Rob Bowen
Chair of Foreign Languages .....	Henry Stern (Interim)
Chair of History .....	Dan Pierce
Chair of Literature and Language .....	Lorena Russell
Chair of Music .....	Wayne Kirby
Chair of Philosophy .....	Brian Butler
Director of the Center for Jewish Studies.....	Rick Chess

Natural Sciences:

Dean.....	Keith Krumpe
Chair of Atmospheric Science .....	Doug Miller
Chair of Biology .....	Betsy Wilson
Chair of Chemistry .....	Herman Holt
Chair of Computer Science .....	Dean Brock
Chair of Environmental Studies .....	Bill Miller
Chair of Mathematics .....	David Peifer

Natural Sciences (continued):

Chair of Multimedia Arts and Sciences .....	Lorraine Walsh
Chair of Physics .....	Randy Booker
Director of Joint UNCA/NCSU Engineering.....	Yusef Fahmy
Director of Environmental Quality Institute .....	Steven Patch
Director of Mossbauer Effect Data Center .....	John Stevens
Director of Pisgah Astronomical Research & Science Education Center ...	Charles Bennett
Director of Summer Conferences and Institutes .....	Ann Martin

Social Sciences:

Dean and Director .....	Lisa Friedenberg
Chair of Economics .....	Jeff Konz
Chair of Education .....	Jeanne McGlenn
Chair of Health and Wellness .....	Kathie Garbe
Chair of Management and Accountancy .....	Claudel McKenzie
Chair of Mass Communication .....	Alan Hantz
Co-Chairs of Political Science .....	Dolly Mullen & Bill Sabo
Chair of Psychology .....	Pam Laughon
Chair of Sociology .....	Volker Frank
Coordinator of Burroughs Wellcome Scholars .....	Tim Forrest
Director of Assessment Program .....	Lisa Friedenberg
Director of Teaching Fellows .....	Brenda Hopper

University Programs:

Associate Provost and Dean.....	Edward Katz
Assistant Provost for Graduate & Continuing Education .....	Sandra Byrd
Director of Africana Studies .....	Edward Katz (Interim)
Director of Arts & Ideas .....	Laura Facciponti
Director of Asheville Hub Project .....	Edward Katz
Director of Craft Campus .....	Brent Skidmore
Director of Cultural & Special Events.....	Bunny Halton-Subkis
Director of Honors.....	Blake Hobby
Director of Humanities.....	Cindy Ho
Director of Integrated Liberal Studies .....	Edward Katz
Director of Interdisciplinary Programs .....	Peg Downes
Director of International Studies Programs .....	Elizabeth Snyder
Director of Key Center for Community Citizenship & Service Learning ..	Merritt Moseley
Director of National Environmental Modeling and Analysis Center .....	Jim Fox
Director of North Carolina Center for Health and Wellness .....	Keith Ray
Director of Renaissance Computing Institute (RENCI) .....	Jim Fox
Director of Undergraduate Research.....	Mark Harvey
Co-Directors of Women's Studies.....	Alice Weldon & Marcia Ghidina

**Office of Finance and Operations**

Vice Chancellor for Finance and Campus Operations .....	John Pierce
Associate Vice Chancellor for Finance .....	Suzanne Bryson
Associate Vice Chancellor for Campus Operations .....	Steve Baxley
Assistant Vice Chancellor for Finance /University Controller .....	Karen Shaw
Assistant Provost for Budgeting .....	Pat Catterfeld
Director of Auxiliary Services .....	David Perkins
Director of Business Service.....	Brenda McKinney
Director of Design and Construction .....	Donald Gordon
Director of Facilities Management.....	David Todd
Director of Purchasing .....	Betty Ponder
University Budget Director .....	Pat Catterfeld (Interim)

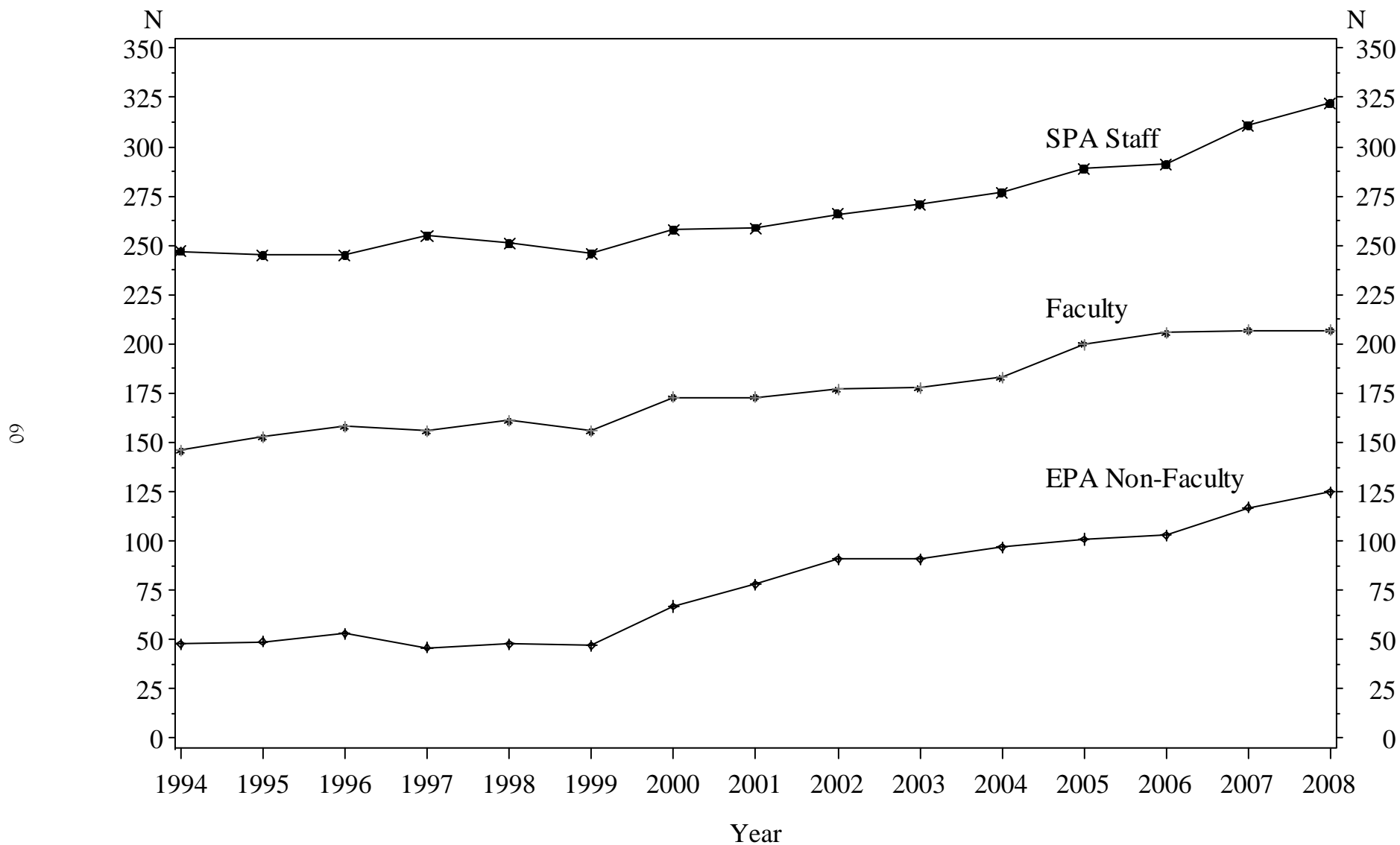
## **Alumni & Development**

Vice Chancellor for Alumni & Development .....	William P. Massey
Associate Vice Chancellor for Alumni.....	Kevan Frazier
Associate Vice Chancellor for Development .....	Jim Brewer
Assistant Vice Chancellor for Planned Giving .....	Julie Heinitsh
Director of Annual Giving.....	Rebecca Lamb
Director of Advancement Services.....	Julia Fuog Caudill
Director of University News Service .....	Merianne Epstein
Director of University Publications .....	Ashlea Allen

## **Student Affairs**

Vice Chancellor for Student Affairs .....	Bill Haggard
Assistant Vice Chancellor for Student Affairs .....	Calvin A. Kelly
Assistant Vice Chancellor for Budgeting and Assessment.....	John Bucher
Dean of Students.....	Jacquelyn McHargue
Director of Campus Recreation.....	Jill Moffitt
Director of SAIL (Student Activities & Integrative Learning).....	Meg Dutnell
Director of Campus Police.....	Steve Lewis
Director of Dining Services.....	Danny Dawkins
Director of Housing Operations .....	Vollie Barnwell
Director of Residential & Citizenship Education .....	Melanie Rhodarmer
Director of Student Health & Counseling Center.....	Jay Cutspec

Figure 12: Full-Time Employees by Type: 1994-2008



Notes:

- (1) EPA non-faculty employees include administrators, librarians, athletic coaches and other professional staff
- (2) Arboretum employees are not included

Table 40

Employees by Employment Status, Job Class, Sex and Race  
Fall 2008

Job Class		Full-Time			Part-Time			Status
		Female	Male	Subtotal	Female	Male	Subtotal	Totals
Exec/Admin/Mgmt	White	24	23	47	1	0	1	48
	Black	2	1	3	0	0	0	3
	Class Total	26	24	50	1	0	1	51
Faculty	White	72	107	179	55	61	116	295
	Black	4	4	8	2	3	5	13
	Hispanic	4	4	8	1	0	1	9
	Asian	5	5	10	2	0	2	12
	Am Indian	0	2	2	0	0	0	2
	Class Total	85	122	207	60	64	124	331
Other Professional	White	91	53	144	5	4	9	153
	Black	10	4	14	0	0	0	14
	Asian	0	1	1	0	0	0	1
	Class Total	101	58	159	5	4	9	168
Technical/Para Prof	White	22	20	42	1	3	4	46
	Black	3	0	3	0	0	0	3
	Asian	1	1	2	0	0	0	2
	Class Total	26	21	47	1	3	4	51
Clerical	White	59	5	64	9	0	9	73
	Black	2	0	2	0	0	0	2
	Asian	1	0	1	0	0	0	1
	Class Total	62	5	67	9	0	9	76
Skilled Crafts	White	6	27	33	2	0	2	35
	Black	0	2	2	0	0	0	2
	Class Total	6	29	35	2	0	2	37
Service/Maintenance	White	32	41	73	1	0	1	74
	Black	4	10	14	0	0	0	14
	Hispanic	0	1	1	0	0	0	1
	Class Total	36	52	88	1	0	1	89
Race Totals	White	306	276	582	74	68	142	724
	Black	25	21	46	2	3	5	51
	Hispanic	4	5	9	1	0	1	10
	Asian	7	7	14	2	0	2	16
	Am Indian	0	2	2	0	0	0	2
	Class Total	342	311	653	79	71	150	803
Total UNCA		342	311	653	79	71	150	803

NOTE: Does not include Arboretum employees.

Table 41

Full-time Instructional Faculty by Rank, Sex and Tenure Status  
Five-Year Trend

Year	Rank	Male		Female		Total	
		N	Tenured	N	Tenured	N	Tenured
2004	Professor	48	47	8	8	56	55
	Assoc Professor	26	22	23	23	49	45
	Asst Professor	25	1	22	1	47	2
	Lecturer	15	0	12	0	27	0
	Research/Visiting	1	0	2	0	3	0
	Total	115	70	67	32	182	102
2005	Professor	49	48	10	10	59	58
	Assoc Professor	27	26	27	26	54	52
	Asst Professor	24	1	19	1	43	2
	Instructor	0	0	1	0	1	0
	Lecturer	18	0	20	0	38	0
	Research/Visiting	2	0	2	0	4	0
Total	120	75	79	37	199	112	
2006	Professor	48	46	14	14	62	60
	Assoc Professor	31	30	23	22	54	52
	Asst Professor	21	1	21	1	42	2
	Instructor	0	0	1	0	1	0
	Lecturer	23	0	20	0	43	0
	Research/Visiting	1	0	3	0	4	0
Total	124	77	82	37	206	114	
2007	Professor	45	44	13	13	58	57
	Assoc Professor	30	29	28	24	58	53
	Asst Professor	23	2	25	1	48	3
	Lecturer	24	0	16	0	40	0
	Research/Visiting	0	0	1	0	1	0
	Total	122	75	83	38	205	113
2008	Professor	43	43	15	15	58	58
	Assoc Professor	28	27	27	27	55	54
	Asst Professor	25	3	25	1	50	4
	Lecturer	25	0	16	0	41	0
	Research/Visiting	1	0	2	0	3	0
	Total	122	73	85	43	207	116

Table 42

Full-time Instructional Faculty with Terminal Degrees by Rank and Department  
Fall 2008

Department	Professor		Associate Professor		Assistant Professor		Lecturer		Total	
	Total N	Pct w/ TD	Total N	Pct w/ TD	Total N	Pct w/ TD	Total N	Pct w/ TD	Total N	Pct w/ TD
Art	3	100.0	1	100.0	3	100.0	2	100.0	9	100.0
Atmospheric Sciences	1	100.0	1	100.0	2	100.0			4	100.0
Biology	2	100.0	3	100.0	3	100.0	1	100.0	9	100.0
Chemistry	3	100.0	3	100.0	2	100.0	2	50.0	10	90.0
Classics	1	100.0	3	100.0					4	100.0
Computer Science	2	100.0	2	100.0	1	100.0	2	0.0	7	71.4
Drama			3	100.0	3	100.0			6	100.0
Economics	4	100.0	3	100.0	1	100.0			8	100.0
Education	1	100.0	3	100.0	3	100.0	1	0.0	8	87.5
Environmental Studies	3	100.0	2	100.0	3	100.0			8	100.0
Foreign Languages	2	100.0	4	100.0	3	100.0	4	50.0	13	84.6
Health & Wellness			1	100.0	2	100.0	3	0.0	6	50.0
History	2	100.0	3	100.0	2	100.0			7	100.0
Humanities							4	25.0	4	25.0
Literature	9	100.0	2	100.0	3	66.7	4	50.0	18	83.3
Management & Accountancy	3	33.3	1	100.0	4	100.0	4	0.0	12	50.0
Mass Communication	2	100.0	1	100.0	1	100.0	3	66.7	7	85.7
Master of Liberal Arts							1	100.0	1	100.0
Mathematics	3	100.0	4	100.0	3	100.0	4	25.0	14	78.6
Multimedia Arts and Sciences			1	100.0	3	100.0	1	100.0	5	100.0
Music	1	100.0	1	100.0	3	100.0	1	0.0	6	83.3
Philosophy	1	100.0	3	100.0	1	100.0			5	100.0
Physics	5	100.0					2	0.0	7	71.4
Political Science	4	100.0	2	100.0	1	100.0			7	100.0
Psychology	4	100.0	4	100.0	4	100.0			12	100.0
Religious Studies							1	0.0	1	0.0
Sociology	2	100.0	5	100.0	1	100.0	1	0.0	9	88.9
Total	58	96.6	56	100.0	52	98.1	41	34.1	207	85.5

Table 43  
Full-time Instructional Faculty Salaries by Rank  
Five-Year Trend

Year	Rank	N	Salary			
			Mean	Min	Max	Total Outlay
2004	Professor	56	74,514	53,489	105,098	4,172,808
	Associate Professor	49	54,872	47,529	83,603	2,688,718
	Assistant Professor	47	48,568	41,120	69,045	2,282,715
	Lecturer	27	38,188	28,000	58,928	1,031,077
	University Total	182	56,678	28,000	105,098	10,315,318
2005	Professor	59	75,196	55,569	106,098	4,436,536
	Associate Professor	54	55,814	48,519	84,753	3,013,948
	Assistant Professor	43	48,551	42,500	72,195	2,087,684
	Lecturer	38	38,600	28,350	65,000	1,466,784
	University Total	199	56,510	28,350	106,098	11,245,502
2006	Professor	62	77,920	60,160	108,274	4,831,045
	Associate Professor	54	59,985	52,269	89,393	3,239,195
	Assistant Professor	42	52,579	44,000	76,235	2,208,304
	Lecturer	43	42,162	28,500	69,040	1,812,962
	University Total	206	59,840	28,500	108,274	12,327,097
2007	Professor	58	83,982	65,712	117,170	4,870,936
	Associate Professor	58	65,270	57,359	89,691	3,785,677
	Assistant Professor	48	57,931	50,000	81,822	2,780,701
	Lecturer	40	47,337	32,000	76,183	1,893,469
	University Total	205	65,289	32,000	117,170	13,384,227
2008	Professor	58	87,733	68,883	160,079	5,088,523
	Associate Professor	55	67,808	59,680	92,564	3,729,435
	Assistant Professor	50	61,016	51,250	91,000	3,050,778
	Lecturer	41	48,156	26,137	79,668	1,974,379
	University Total	207	67,639	26,137	160,079	14,001,262

NOTE: Instructors, research and visiting professors are not shown in detail but are included in University Total

Table 44  
Faculty Salary Comparisons  
2007-08

	Professor	Associate Professor	Assistant Professor
UNC Asheville	84,000	65,500	57,700
AAUP-Public Comparisons			
Doctoral Institutions	109,569	77,033	65,416
Comprehensive	85,726	68,034	57,540
Baccalaureate	80,408	65,431	54,844
UNC System Comparisons			
Appalachian State	86,800	71,700	59,600
East Carolina	94,900	73,500	65,200
Elizabeth City	79,500	70,700	60,300
Fayetteville State	80,000	66,800	60,000
NC A & T	91,100	74,900	64,300
NC Central	99,300	76,900	67,300
North Carolina State	110,800	82,000	69,900
UNC-Chapel Hill	138,500	90,900	76,900
UNC-Charlotte	105,000	77,200	67,000
UNC-Greensboro	103,200	75,600	62,800
UNC-Pembroke	86,100	68,000	57,300
UNC-Wilmington	91,000	72,600	60,500
Western Carolina	85,700	71,700	59,800
Winston-Salem	90,300	72,300	66,500
UNC System Average	95,080	74,020	63,673
Peer Institution Comparisons			
Bucknell University (PA)	111,100	80,500	67,700
Eastern Connecticut State Univ	88,600	66,800	54,600
Evergreen State College (WA)	n/a	n/a	n/a
Furman University (SC)	91,400	68,700	53,700
Lafayette College (PA)	114,800	84,600	66,700
Univ of Mary Washington (VA)	84,800	64,100	50,100
Massachusetts C. of Liberal Arts	74,800	60,900	51,600
New College of Florida	80,800	64,600	51,500
Ramapo College of New Jersey	105,100	83,600	64,000
Richard Stockton College (NJ)	108,900	82,900	61,400
St. Mary's College (MD)	n/a	n/a	n/a
SUNY College at Geneseo (NY)	77,600	64,500	54,400
Truman State University (MO)	71,100	55,000	46,700
Union College (NY)	102,300	73,200	61,400
Univ of Minnesota at Morris	75,900	61,100	50,200
Peer Institution Average	91,323	70,038	56,462

Source: *The Chronicle of Higher Education*, April 18, 2008

# Fiscal Resources

Table 45

## Current Fund Revenues and Expenditures: Five-Year Trend

Revenue Source	2003-04		2004-05		2005-06		2006-07		2007-08	
	Amount	Percent	Amount	Percent	Amount	Percent	Amount	Percent	Amount	Percent
Tuition and Fees	12,690,775	18.5	14,413,409	19.1	15,259,564	20.5	16,157,240	16.1	16,474,470	20.5
Grants and Contracts- operation	4,618,012	6.7	4,499,973	6.0	4,630,367	6.2	6,191,511	6.2	5,532,628	6.9
Sales and Services of Auxilary Ent.	8,355,537	12.1	9,473,995	12.6	9,149,494	12.3	10,077,783	10.0	9,898,193	12.3
Other Operating Sources	248,040	0.4	328,670	0.4	528,543	0.7	1,046,854	1.0	1,230,695	1.5
State Appropriations	25,495,221	37.1	27,087,456	36.0	30,326,631	40.7	33,646,626	33.5	37,253,422	46.3
Grants - nonoperating	195,276	0.3	2,553,377	3.4	2,012,222	2.7	2,292,690	2.3	2,406,213	3.0
Gifts	1,012,967	1.5	1,370,743	1.8	1,441,854	1.9	1,449,193	1.4	1,852,427	2.3
Investment income	1,134,082	1.6	1,027,336	1.4	1,194,397	1.6	1,848,930	1.8	1,228,391	1.5
Other nonoperating revenue	4,637	0.0	5,056	0.0	657,332	0.9	211,036	0.2	17,471	0.0
Other revenues and additions	15,028,921	21.8	14,555,227	19.3	9,309,028	12.5	27,566,950	27.4	4,624,265	5.7
<b>Total Revenues &amp; Additions</b>	<b>68,783,468</b>		<b>75,315,242</b>		<b>74,509,432</b>		<b>100,488,813</b>		<b>80,518,175</b>	
<b>Expenses and other Deductions</b>										
Instruction	17,577,957	30.8	19,199,716	29.2	20,650,966	29.7	22,793,050	31.1	24,693,248	32.4
Research	465,019	0.8	555,845	0.8	1,157,980	1.7	777,719	1.1	1,169,122	1.5
Public Service	4,016,609	7.0	5,553,990	8.4	5,472,175	7.9	5,824,949	7.9	7,158,655	9.4
Academic Support	3,230,901	5.7	3,549,774	5.4	4,014,370	5.8	4,012,216	5.5	4,506,323	5.9
Student Services	3,224,353	5.7	3,113,871	4.7	3,144,182	4.5	3,332,184	4.5	3,374,238	4.4
Institutional Support	6,020,338	10.6	5,974,275	9.1	6,747,538	9.7	7,434,335	10.1	8,448,284	11.1
Operation & Maintenance of Plant	5,114,847	9.0	6,654,601	10.1	8,516,188	12.2	9,170,819	12.5	7,398,847	9.7
Depreciation	4,512,358	7.9	5,209,134	7.9	5,513,269	7.9	3,520,824	4.8	3,652,697	4.8
Scholarships and Fellowships	1,986,815	3.5	2,060,047	3.1	2,014,526	2.9	2,808,183	3.8	2,793,798	3.7
Auxiliary enterprises	9,761,569	17.1	12,207,825	18.6	10,802,957	15.5	11,931,417	16.3	11,621,010	15.3
Nonoperating Exp. and Deduct.	1,068,914	1.9	1,659,951	2.5	1,600,895	2.3	1,710,889	2.3	1,350,478	1.8
<b>Total Expenses and Deductions</b>	<b>56,979,680</b>		<b>65,739,029</b>		<b>69,635,046</b>		<b>73,316,585</b>		<b>76,166,700</b>	

Source: IPEDS F-1 from UNC Asheville Financial Affairs

Table 46  
Operating Expenditures by Function  
2007-08

	Salaries & Benefits	Supplies & Materials	Services	Scholarships & Fellowships	Utilities	Depreciation	Total
Instruction	21,502,175	1,940,444	1,250,629	15,131	0		24,708,379
Research	616,230	205,933	346,961	7,460	0		1,176,583
Public Service	4,884,306	755,389	1,398,817	24,984	120,143		7,183,639
Academic Support	3,274,297	952,119	279,907	0	0		4,506,323
Student Services	2,430,876	110,346	833,016	483	0		3,374,721
Institutional Support	6,581,055	227,362	1,613,986	1,009	0		8,423,412
Operations & Maintenance/Plant	5,312,805	0	536,022	0	1,550,021		7,398,847
Student Financial Aid	25,882	0	0	2,701,625	0		2,727,507
Auxiliary Enterprises	4,145,677	2,516,252	4,279,622	43,106	679,458		11,664,116
Depreciation						3,652,697	3,652,697
Total Operating Expenses	48,773,303	6,707,844	10,538,959	2,793,798	2,349,622	3,652,697	74,816,222
Percent of Total	65%	9%	14%	4%	3%	5%	100%

Source: *Controller's Office*

Table 47  
Tuition and Fees per Year

	Academic Year					5-Year
	04-05	05-06	06-07	07-08	08-09	Pct Change
<b>Undergraduate Tuition:</b>						
In-State:						
Full-Time (12 or more hrs.)	1,896	1,897	2,172	2,307	2,339	23.4
3/4-Time (9-11 hrs.)	1,422	1,422	1,630	1,730	1,754	23.3
1/2-Time (6-8 hrs.)	948	948	1,086	1,154	1,170	23.4
1/4-Time (1-5 hrs.)	474	474	542	577	585	23.4
Out-of-State:						
Full-Time (12 or more hrs.)	11,097	11,697	12,297	13,297	13,669	23.2
3/4-Time (9-11 hrs.)	8,322	8,772	9,222	9,973	10,252	23.2
1/2-Time (6-8 hrs.)	5,548	5,848	6,148	6,649	6,835	23.2
1/4-Time (1-5 hrs.)	2,774	2,924	3,074	3,324	3,417	23.2
<b>Graduate Tuition:</b>						
In-State:						
Full-Time (9 or more hrs.)	2,255	2,255	2,530	2,705	2,743	21.6
3/4-Time (6-8 hrs.)	1,692	1,692	1,898	2,029	2,057	21.6
1/2-Time (3-5 hrs.)	1,128	1,128	1,266	1,353	1,372	21.6
1/4-Time (1-2 hrs.)	564	564	632	676	686	21.6
Out-of-State:						
Full-Time (9 or more hrs.)	11,869	11,869	12,469	13,569	13,949	17.5
3/4-Time (6-8 hrs.)	8,902	8,902	9,352	10,177	10,462	17.5
1/2-Time (3-5 hrs.)	5,934	5,934	6,234	6,785	6,975	17.5
1/4-Time (1-2 hrs.)	2,968	2,968	3,118	3,392	3,487	17.5
<b>Total Fees (Full-Time):</b>	1,495	1,629	1,709	1,858	1,866	24.8
<b>Room (Double Occupancy):</b>						
Founders Hall	2,160	2,560	3,200	3,450	3,760	74.1
Mills Hall	2,800	3,200	3,200	3,450	3,760	34.3
South Ridge	2,800	3,200	3,200	3,450	3,760	34.3
West Ridge	2,800	3,200	3,200	3,450	3,760	34.3
Governor's Hall	3,050	3,450	3,200	3,450	3,760	23.3
<b>Room (Single Occupancy):</b>						
Governor's Village	2,800	3,200	3,360	3,600	3,920	40.0
Governor's Hall	3,550	4,150	4,360	4,700	5,120	44.2
<b>Board:</b>						
Meal Plan (Carte Blanc)	2,490	2,590	2,680	2,780	2,860	14.9

Source: Cashiers Office/Budget Office

Table 48

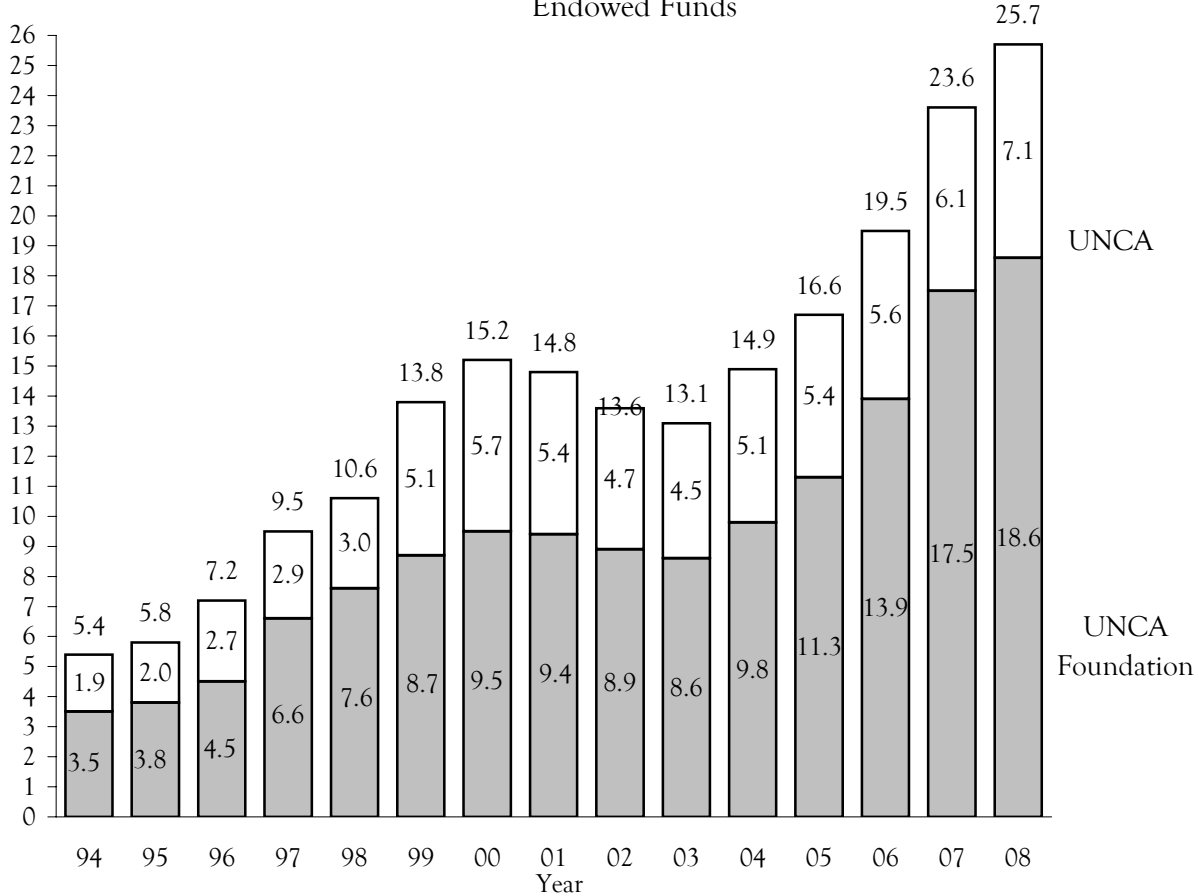
External Grants and Contracts Funding Amounts by Fiscal Year

	FY 2000	FY 2001	FY 2002	FY 2003	FY 2004	FY 2005	FY 2006	FY 2007	FY 2008
Total Submissions	49	52	63	64	81	51	56	60	66
Total Awards	44	40	19	46	61	30	34	41	37
Num of Different Investigators	27	40	15	31	54	30	19	29	35
Total Amount Awarded	\$1,604,253	\$1,210,975	\$369,418	\$991,007	\$4,781,215	\$1,327,827	\$4,205,235	\$5,394,623	\$4,563,395

Source: UNC Asheville Sponsored Scholarship and Programs

Amount in  
Millions

Figure 13  
Endowed Funds



Source: Controller's Office

Table 49  
Source of Outright Gift Income by Year

	2001-02	2002-03	2003-04	2004-05	2005-06	2006-07	2007-08
Alumni	186,251	133,712	133,951	661,941	142,638	265,488	163,500
Parents	32,887	42,391	39,344	138,812	52,660	549,920	84,122
Other Individuals	888,201	770,626	649,674	688,704	2,093,906	1,117,877	1,529,399
Foundations	277,445	389,900	350,598	299,945	280,750	235,450	853,115
Corporations	524,510	428,840	849,613	238,801	329,014	303,939	1,004,605
Religious Organizations	500	970	70	2,200	1,500	1,550	1,284
Fundraising Consortia	0	0	0	0	0	0	0
Other Organizations	73,781	131,077	17,099	14,124	57,865	733,091	952,116
Total Giving*	1,983,575	1,897,516	2,040,349	2,044,527	2,958,333	3,207,295	4,588,141

\*Deferred giving not included

Source: Voluntary Support of Education Survey

Table 50  
Alumni Donations

Fiscal Year	# Alumni of Record	Number Donors	Total Giving*	Giving Rate
1998-99	6,790	643	\$133,579	9.5%
1999-00	7,316	751	\$121,979	10.3%
2000-01	7,747	898	\$150,769	11.6%
2001-02	8,126	926	\$186,250	11.4%
2002-03	8,454	1,180	\$133,712	14.0%
2003-04	9,900	1,094	\$133,951	11.1%
2004-05	10,639	986	\$661,941	9.3%
2005-06	*10,639	599	\$142,638	5.6%
2006-07	10,990	1,044	\$265,488	9.5%
2007-08	11,578	963	\$163,500	8.3%

\*In previous years, the # on record at June 30 (end of FY) was used. This year, the # on record at July 1 (beginning FY) was used.

\*\*Deferred giving not included

Source: *Voluntary Support of Education Survey*

Table 51  
Outright Gift Income Summary

	2002-03	2003-04	2004-05	2005-06	2006-07	2007-08
<b>Gifts for Current Operations</b>						
Unrestricted	206,310	537,147	193,524	138,938	295,177	140,446
Restricted						
Academic Divisions	1,900	2,500	3,400	4,790	300	63,421
Faculty & Staff Compensation	0	0	0	0	0	0
Research	0	0	20,000	0	0	0
Public Service & Extension	0	0	0	0	0	0
Library	392	214	14	385	82	0
Operation and Maint. of Plant	35,400	10,513	1,785	11,300	15,050	14,750
Student Financial Aid	259,170	242,821	226,481	223,059	164,384	120,144
Athletics	266,615	218,138	321,757	231,392	223,160	169,250
Other	281,560	456,222	807,938	239,147	717,106	652,294
<b>Total Current Operations</b>	<b>1,051,347</b>	<b>1,467,555</b>	<b>1,574,899</b>	<b>849,011</b>	<b>1,415,259</b>	<b>1,160,305</b>
<b>Gifts for Capital Purposes</b>						
Property, Building, Equipment	601,118	353,577	32,320	137,043	1,277,314	2,361,810
Endowment - Unrestricted	11,200	10	93	250	325	0
Endowment - Restricted	232,187	217,578	425,670	1,954,044	506,676	1,061,976
Loan Funds	1,664	1,629	11,545	17,985	7,721	4,050
<b>Total Capital Purposes</b>	<b>846,169</b>	<b>572,794</b>	<b>469,628</b>	<b>2,109,322</b>	<b>1,792,036</b>	<b>3,427,836</b>
<b>Total Outright Giving</b>	<b>1,897,516</b>	<b>2,040,349</b>	<b>2,044,527</b>	<b>2,958,333</b>	<b>3,207,295</b>	<b>4,588,141</b>

Source: *Voluntary Support of Education Survey*

## Figure 14

### Campus Map

Click on the following link to go to the Campus Map:

<http://www.unca.edu/campusmap/>

Table 52  
Building Inventory  
Fall 2008

	Year Constructed	Building Cost	Replacement Cost	Accessible (Sq. Ft.)	Assignable (Sq. Ft.)	Gross (Sq. Ft.)
<b>Academic and Administrative</b>						
Carmichael Hall	1966	548,000	5,719,484	18,019	18,019	31,441
Carol Belk Theatre	1976	477,000	2,650,491	7,761	7,761	10,715
Dining Hall	1995	4,290,000	14,786,959	26,359	26,359	60,792
Health & Fitness Center	1997	6,075,600	12,973,463	44,423	44,501	53,000
Highsmith Union	2004	15,800,000	21,331,453	53,936	53,936	72,000
Justice Center	1963	1,205,732	12,554,965	15,855	35,919	51,780
Karpen Hall	1990	5,600,000	15,623,957	34,024	34,024	64,000
Lipinsky Hall	1964	791,758	9,346,474	21,516	21,516	38,173
New Hall	2006	5,500,000	6,006,000	17,211	17,211	31,855
Owen Hall	1979	1,809,259	8,788,476	28,879	28,879	47,366
Phillips Hall	1963	493,800	4,463,987	8,730	12,752	18,574
Plant Maint. Storage	1990	5,000	8,667	484	484	509
Plant Maintenance	1963	272,414	3,487,490	13,554	14,447	15,989
Print Services	2002	174,520	243,454	3,694	3,694	4,000
Ramsey Library	1965	685,637	11,717,967	35,608	35,608	47,641
Ramsey Library (New Wing)	1990	6,400,000	13,670,961	43,800	43,800	55,926
Reuter Center	2003	3,900,000	5,333,808	13,752	13,752	19,580
Rhoades Hall	1961	1,121,180	7,532,979	16,653	16,653	26,720
Rhoades Science Tower	1966	396,456	4,184,987	7,497	7,497	14,624
River Road Warehouse	1995	400,000	1,777,935	20,525	20,525	22,577
Robinson Hall	1988	6,175,000	17,855,950	41,258	41,258	64,014
Sam Millar Facilities Complex	2007	5,559,215		21,134	21,134	27,659
Vance Hall	1967	94,000	976,498	2,164	2,164	4,222
Weizenblatt Health Center	1972	191,000	1,813,495	4,687	4,687	7,276
West Ridge Parking Deck	1999	2,474,697	3,523,808	70,200	70,200	70,200
Zageir Hall	1975	1,130,000	7,532,979	18,365	18,365	31,035
Zageir Parking Deck	2001	842,600	969,805			28,000
Zeis Hall	2008	22,000,000	22,000,000	45,257	45,257	88,000
<b>Residential</b>						
Ashe Hall	1969	132,670	1,534,496	0	4,619	6,537
Founders Hall	1982	2,943,027	14,647,459	42,668	42,668	63,719
Gardner Hall	1967	146,000	1,534,496	168	4,006	6,648
Governors Hall	2003	11,500,000	15,727,897	36,098	36,098	59,500
Hoey Hall	1969	132,670	1,534,496	0	4,595	6,537
Mills Hall	1987	4,250,000	14,647,459	41,877	41,877	64,840
Moore Hall	1967	146,000	1,534,496	0	4,158	6,648
Scott Hall	1967	146,000	1,534,496	792	4,090	6,648
South Ridge Hall	1994	3,950,000	9,067,474	22,354	22,354	40,032
West Ridge Hall	1999	7,600,000	11,159,968	28,711	28,711	49,417

Figure 15: Percent of Space in Satisfactory Condition, Fall 2007

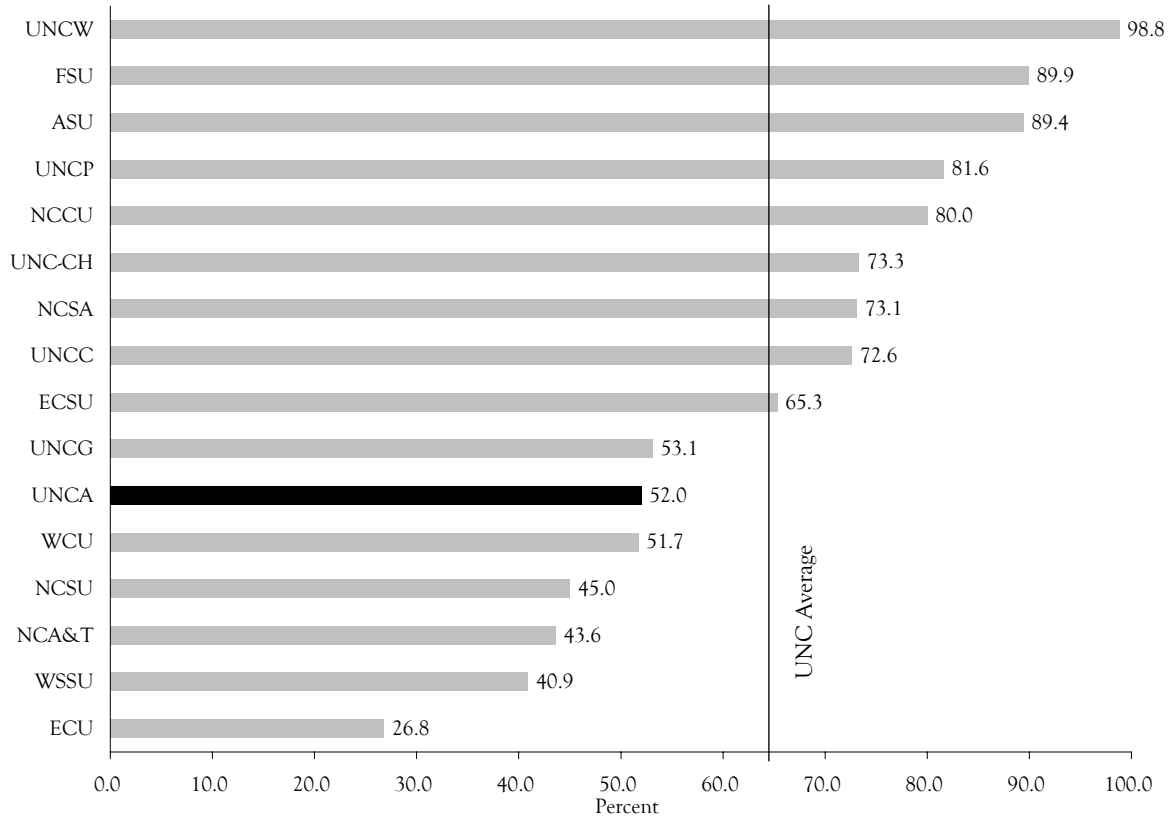
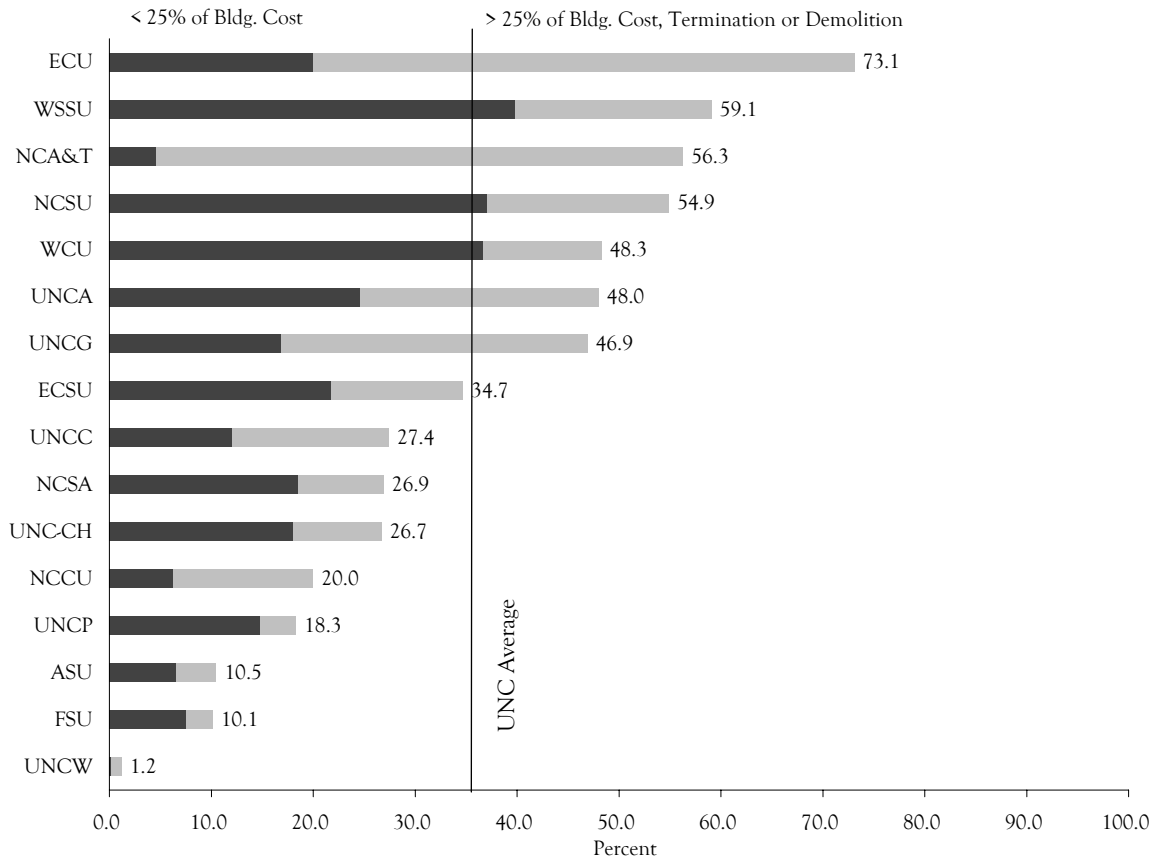


Figure 16: Percent of Space Needing Renovation by Cost Level, Fall 2007



Source: Facilities Inventory and Utilization Study (UNC General Administration)

Table 53  
 Percentage of General Purpose Classrooms Utilized by Day and Time  
 Fall 2008

Time	Percent of Classrooms in Use				
	Mon	Tue	Wed	Thu	Fri
08:00-08:30	28.3	35.0	23.3	35.0	21.7
08:30-09:00	28.3	35.0	23.3	35.0	21.7
09:00-09:30	86.7	91.7	86.7	90.0	41.7
09:30-10:00	86.7	86.7	86.7	86.7	41.7
10:00-10:30	86.7	85.0	88.3	85.0	70.0
10:30-11:00	66.7	90.0	71.7	90.0	61.7
11:00-11:30	86.7	91.7	90.0	91.7	70.0
11:30-12:00	55.0	91.7	66.7	91.7	36.7
12:00-12:30	55.0	88.3	66.7	88.3	36.7
12:30-01:00	78.3		76.7		63.3
01:00-01:30	51.7		48.3		53.3
01:30-02:00	71.7	80.0	68.3	80.0	66.7
02:00-02:30	56.7	80.0	53.3	80.0	51.7
02:30-03:00	75.0	80.0	78.3	80.0	63.3
03:00-03:30	68.3	70.0	71.7	66.7	26.7
03:30-04:00	68.3	70.0	71.7	66.7	26.7
04:00-04:30	41.7	76.7	43.3	66.7	13.3
04:30-05:00	40.0	45.0	41.7	33.3	11.7
05:00-05:30	40.0	43.3	41.7	31.7	11.7
05:30-06:00	10.0	40.0	11.7	31.7	8.3
06:00-06:30	55.0	56.7	43.3	35.0	8.3
06:30-07:00	55.0	55.0	43.3	35.0	
07:00-07:30	51.7	53.3	36.7	31.7	
07:30-08:00	51.7	50.0	36.7	30.0	
08:00-08:30	41.7	41.7	31.7	20.0	
08:30-09:00	15.0	21.7	8.3	13.3	
09:00-09:30		6.7		1.7	
09:30-10:00		5.0			

Table 54

Classrooms and Labs by Building  
Fall 2008

	Classrooms				Class Labs				Non-Class Labs			
	N	Capacity			N	Capacity			N	Capacity		
	Rms	Min	Mean	Max	Rms	Min	Mean	Max	Rms	Min	Mean	Max
Carmichael Hall	8	30	38.8	40	1	18	18.0	18				
Carol Belk Theatre									2	24	24.5	25
Governor's Hall	1	20	20.0	20					1	20	20.0	20
Justice Center	2	20	25.0	30	1	35	35.0	35	2	1	5.5	10
Karpen Hall	18	12	30.8	74	3	12	24.0	42	4	6	14.5	20
Lipinsky Hall	1	30	30.0	30	1	75	75.0	75	18	1	5.0	16
New Classroom Bldg	9	15	23.9	30	2	15	17.5	20				
Owen Hall	4	30	40.0	50	6	10	15.5	25	10	1	6.8	36
Ramsey Library									1	22	22.0	22
Rhoades/Robinson	5	30	64.2	180	19	12	22.4	32	19	1	8.4	20
West Ridge Hall									2	1	1.0	1
Zageir Hall	10	20	29.5	40	1	20	20.0	20				
Zeis Hall	2	20	34.0	48	2	10	10.0	10	2	10	12.0	14
Total	60	12	33.7	180	36	10	22.1	75	61	1	8.3	36

Table 55

## Residence Hall Capacity and Number of Students Housed

	2005			2006			2007			2008		
	Normal Capacity	Number Housed	Pct of Cap	Normal Capacity	Number Housed	Pct of Cap	Normal Capacity	Number Housed	Pct of Cap	Normal Capacity	Number Housed	Pct of Cap
Residence Hall												
Ashe Hall	25	24	96.0	25	23	92.0	25	30	120.0	25	25	100.0
Founders Hall	300	259	86.3	287	267	93.0	287	284	99.0	287	291	101.4
Gardner Hall	24	20	83.3									
Governors Hall	184	171	92.9	180	169	93.9	180	184	102.2	180	189	105.0
Hoey Hall	25	20	80.0	25	24	96.0	25	28	112.0	25	25	100.0
Mills Hall	300	265	88.3	284	279	98.2	284	285	100.4	284	293	103.2
Moore Hall	29	26	89.7	29	24	82.8	29	30	103.4	29	29	100.0
Scott Hall	24	22	91.7	24	24	100.0	24	28	116.7	24	24	100.0
South Ridge Hall	112	110	98.2	107	108	100.9	107	107	100.0	107	110	102.8
West Ridge Hall	148	145	98.0	141	141	100.0	141	137	97.2	141	142	100.7
Total Students	1,171	1,062	90.7	1,102	1,059	96.1	1,102	1,113	101.0	1,102	1,128	102.4

Table 56  
Capital Improvements  
2008-09

	Est. Cost	Est. Completion Date Project Length (Construction Period)
A. Projects Under Construction		
1. Zeis Science & Multimedia Building	22,354,000	Winter 2007
2. Pisgah House - Chancellor's Residence (private funds)	2,000,000	Fall 2009
B. Recently Completed Projects		
1. Zagier Hall renovation	2,569,100	Spring 2007
2. Millar Facilities Management Building	6,318,900	Summer 2007
C. Projects in Design - Funds Allocated		
1. North Carolina Center for Health & Wellness	42,000,000	2011
2. Rhoades Hall & Rhoades Tower renovation	9,103,000	2011
D. Project in Planning - Awaiting Construction Funding		
1. Crafts Campus (private fundraising)		
E. Future Capital Projects - currently unfunded		
1. Carmichael Hall renovation		
2. Governor's Village Residence Hall		
3. Zageir Hall addition		
4. Lipinsky Hall renovation		
5. Public Safety facility		
6. Justice Center renovation		
7. Weizenblatt Health Center renovation		

Source: *Office of Design & Construction*

Table 57  
Ramsey Library Resources  
Five-Year Trend

	2004	2005	2006	2007	2008
Books, Serial Files, Gov. Docs.	259,396	262,283	264,248	265,221	269,452
Current Serial Subscriptions	1,857	4,810	6,405	7,467	7,362
Microforms	857,210	861,742	862,144	860,250	860,972
Audiovisual Materials	10,768	11,374	12,319	12,947	13,850

\*Note: Current serial subscriptions count now includes those in electronic format not previously reported.

SOURCE: *Ramsey Library*